

Bridge Conditions

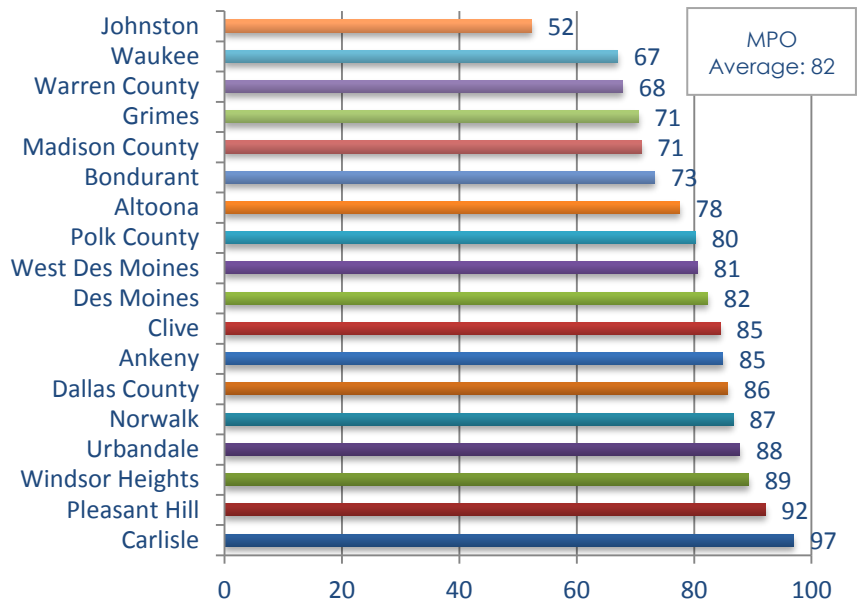
There are over 500 bridge structures in the Des Moines Area MPO planning area.

About Bridge Conditions Data

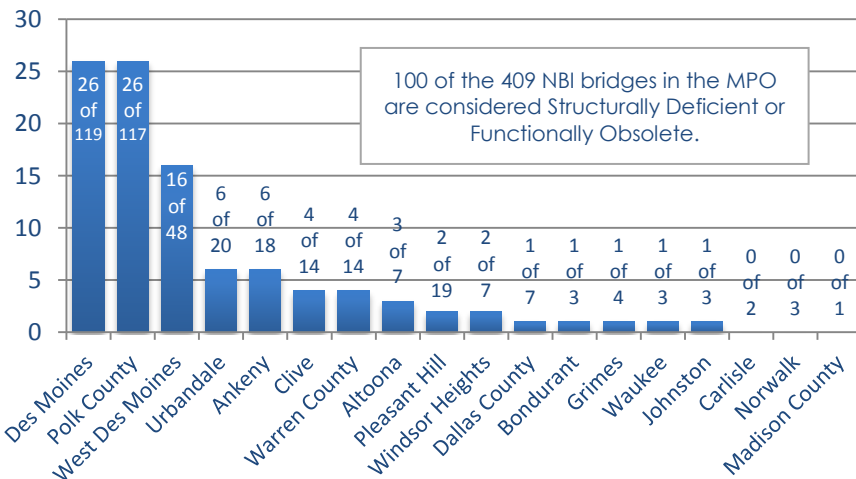
Bridge Structure Inventory and Appraisal (SI&A) sufficiency rating data was obtained from the Iowa DOT. The SI&A rating is a measure of the major components of the existing structure relative to current structure standards. Bridges are rated on a scale of 0 to 100, with 100 representing a bridge that meets all standards. The Iowa DOT developed the SI&A rating to determine when Federal funds could be used to repair or replace a bridge. Bridge replacement candidates must have a rating of less than 50 and bridge rehabilitation candidates must have a rating of 80 or less.

Bridges must be categorized as Structurally Deficient or Functionally Obsolete (SD/FO) to qualify for federal funds. The SI&A rating should not be mistaken as an indicator for the condition of the bridge, but rather as a measure of its functional deficiencies.

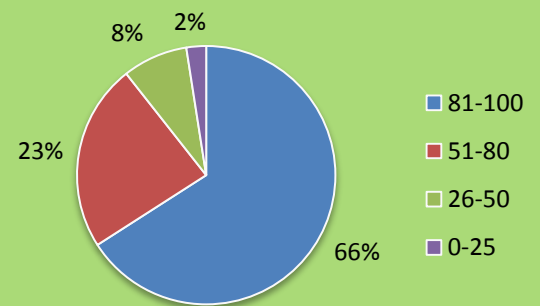
Average SI&A Sufficiency Rating, 2012



Number of Deficient Bridges in MPO Boundary, 2012



Breakdown of MPO SI&A Ratings



Notes:

1. Only bridges in the National Bridge Inventory (NBI) were used for this analysis.

Data Sources:

- 2012 Structure Data, Iowa Department of Transportation
- National Bridge Inventory (NBI), FHWA

The chart above displays all bridges that are classified as Structurally Deficient or Functionally Obsolete¹. Sufficiency ratings for these MPO bridges range from 3 to 96.