

# WALNUT CREEK WATERSHED

Press Release

FOR IMMEDIATE RELEASE  
Monday, April 20, 2015

Media Contact: Gunnar Olson  
515-334-0075 | [golson@dmampo.org](mailto:golson@dmampo.org)

## Open house for Walnut Creek Watershed on April 29

The public is invited to share ideas for improving and protecting the Walnut Creek Watershed at an event kicking off a new watershed management plan. The event is from 4:30 p.m. to 6:30 p.m. Wednesday, April 29, at Windsor Heights Community Center, 6900 School Street.

The watershed management plan is being developed by the Walnut Creek Watershed Management Authority, a regional body of governments created in 2014 to look after the health and wellbeing of the Walnut Creek watershed. Walnut Creek is a tributary of the Raccoon River and a source of drinking water for the Des Moines metro area.

The event is designed for the public to share ideas with planners about the watershed's future, including the water quality and flood mitigation. The event is free and open to the public. Light refreshments will be served. Activities include:

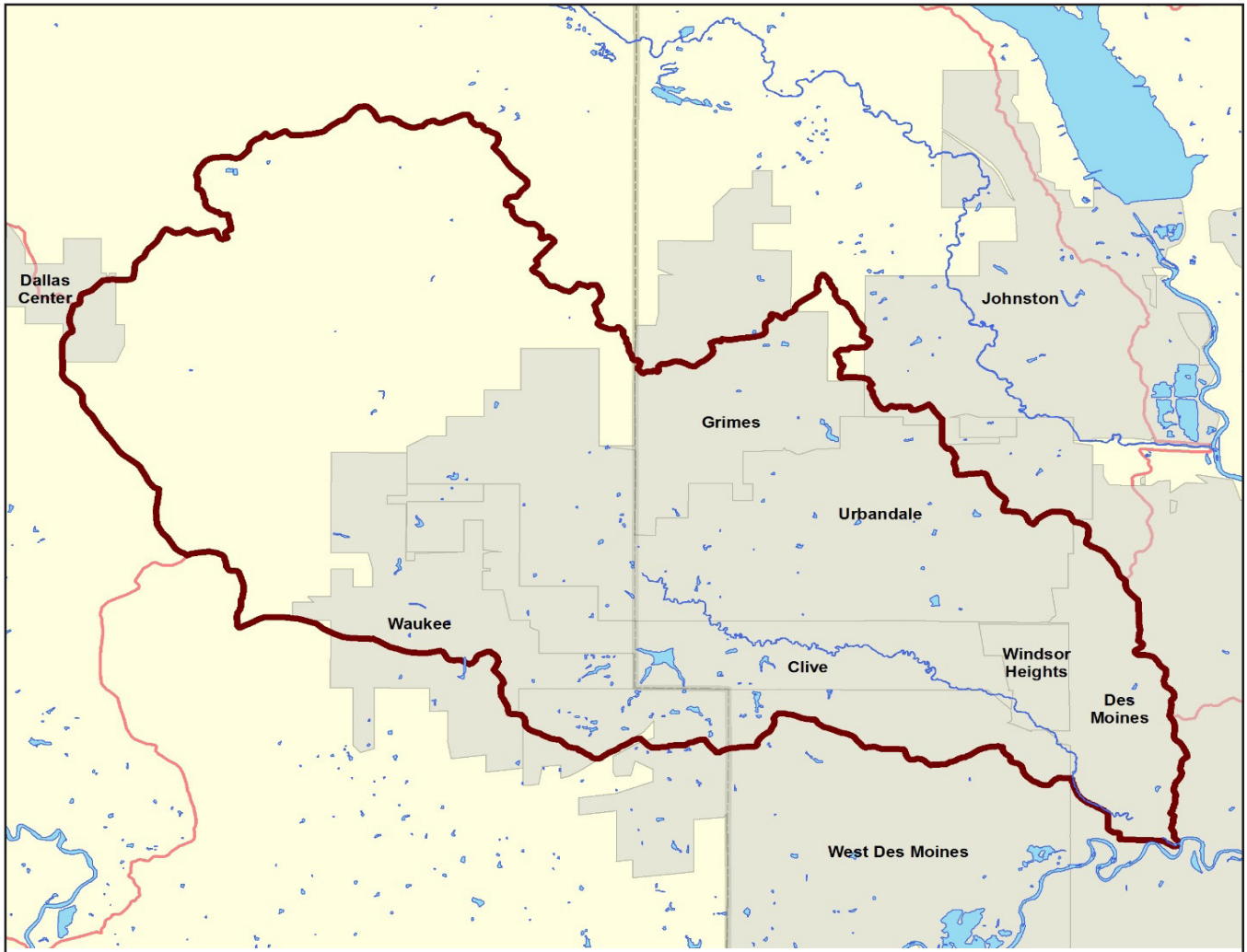
- Test Walnut Creek's water quality
- Discover the work of paddle artist Nancy Crowfoot
- Build a rain barrel
- Preview the new area bicycle commuter map
- Learn the art and science of bicycle building from experts

For more information, please go online to [dmampo.org/walnut-creek-wma](http://dmampo.org/walnut-creek-wma) or contact MPO senior planner Teva Dawson at 515-334-0075 or [tdawson@dmampo.org](mailto:tdawson@dmampo.org).

**Walnut Creek Watershed** covers more than 52,000 acres in Polk and Dallas counties and faces both flooding and water quality challenges. **Walnut Creek Watershed Management Authority** is a coalition of local governments including Dallas County Soil and Water Conservation District, Polk County Soil and Water Conservation District, Polk County, and the cities of Clive, Dallas Center, Grimes, Johnston, Urbandale, Waukee, West Des Moines and Windsor Heights.

**Des Moines Area Metropolitan Planning Organization (MPO)** acts as a regional forum to ensure coordination between the public and local, state, and federal agencies in regard to planning issues and to prepare transportation plans and programs. The MPO develops both long- and short-range multimodal transportation plans, selects and approves projects for federal funding based upon regional priorities, and develops methods to reduce traffic congestion.

# Walnut Creek Watershed



## What is a Watershed Management Authority?

A Watershed Management Authority, also known as a WMA, is a mechanism for cities, counties, Soil and Water Conservation Districts (SWCDs) and stakeholders to cooperatively engage in watershed planning and management. The WMA is formed by a Chapter 28E Agreement, does not have taxing authority and may not acquire property through eminent domain.

## Voting members of the Walnut Creek Watershed Authority:

Polk County, Clive, Dallas Center, Grimes, Johnston, Urbandale, Waukee, West Des Moines, Windsor Heights, Dallas County Soil and Water Conservation District, and Polk County Soil and Water Conservation District.

## Other stakeholders in planning process:

Des Moines, Iowa Soybean Association, Iowa Agriculture Water Alliance, Des Moines Water Works, Green and Sustainable Clive, the Walnut Creek Watershed Coalition and RDG Planning & Design.