

WALNUT CREEK WATERSHED

Press Release

FOR IMMEDIATE RELEASE

Friday, January 8, 2016

Media Contact: Gunnar Olson
515-334-0075 | golson@dmampo.org

Watershed plan will aim to improve Walnut Creek

Local governments, developers and farmers within the Walnut Creek watershed could make the waterway cleaner and less prone to flooding by enacting a slate of changes to local ordinances, development patterns and farming practices.

That is the central theme of a work-in-progress Walnut Creek watershed management plan that is now available for public review and comment. The plan is being developed under the direction of the Walnut Creek Watershed Management Authority, which was formed in 2014 to address environmental concerns including high nitrate levels, high bacteria levels, high turbidity, flash flooding and stream bank erosion. Walnut Creek is a tributary of the Raccoon River and a source of drinking water for the Des Moines metro area. Key recommendations in the draft plan include:

- Adopt and use newer statewide design guidelines to create ponds, wetlands, and other practices that capture and use water as a resource. Such systems would reduce the potential for poor water quality, streambank erosion, property damage and flash flooding.
- Promote the use of bioreactors, saturated buffers and other agricultural management practices to sustain topsoil health and decrease pollution levels in runoff, using Iowa's Nutrient Reduction strategy as a guide.
- Improve implementation and enforcement of pollution prevention measures at construction sites. In so doing, the sediment load to Walnut Creek may be reduced by approximately 7,400 tons per year.

The public is invited to presentations being made to the governing bodies of the Walnut Creek WMA's members.

Tuesday, Jan. 12, at 11:45 a.m. -- Urbandale City Council, City Hall, 3600 86th St., Urbandale

Wednesday, Jan. 13, at 5:30 p.m. -- Polk County Conservation Board, 111 Court Ave., Room 120, Des Moines

Monday, Jan. 18, at 7 p.m. -- Dallas County Soil and Water Conservation District, USDA Service Center, 1918 Green St., Adel

Tuesday, Jan. 26, at 5:30 p.m. -- Grimes City Council, City Hall, 101 NE Harvey St., Grimes

Tuesday, Jan. 26, at 5:30 p.m. -- West Des Moines City Council, City Hall, 4200 Mills Civic Parkway, West Des Moines

Tuesday, Feb. 9, at 7 p.m. -- Dallas Center City Council, Dallas Center Legion Hall, 1502 Walnut St., Dallas Center

Monday, Feb. 15, at 6 p.m. -- Windsor Heights City Council, City Hall, 1145 66th St., Suite 1, Windsor Heights

Tuesday, Feb. 16, at 9 a.m. -- Polk County Soil and Water Conservation District, 1513 N. Ankeny Blvd., Suite 3, Ankeny

Tuesday, Feb. 16, at 6 p.m. -- Johnston City Council, Johnston City Hall, 6221 Merle Hay Road, Johnston

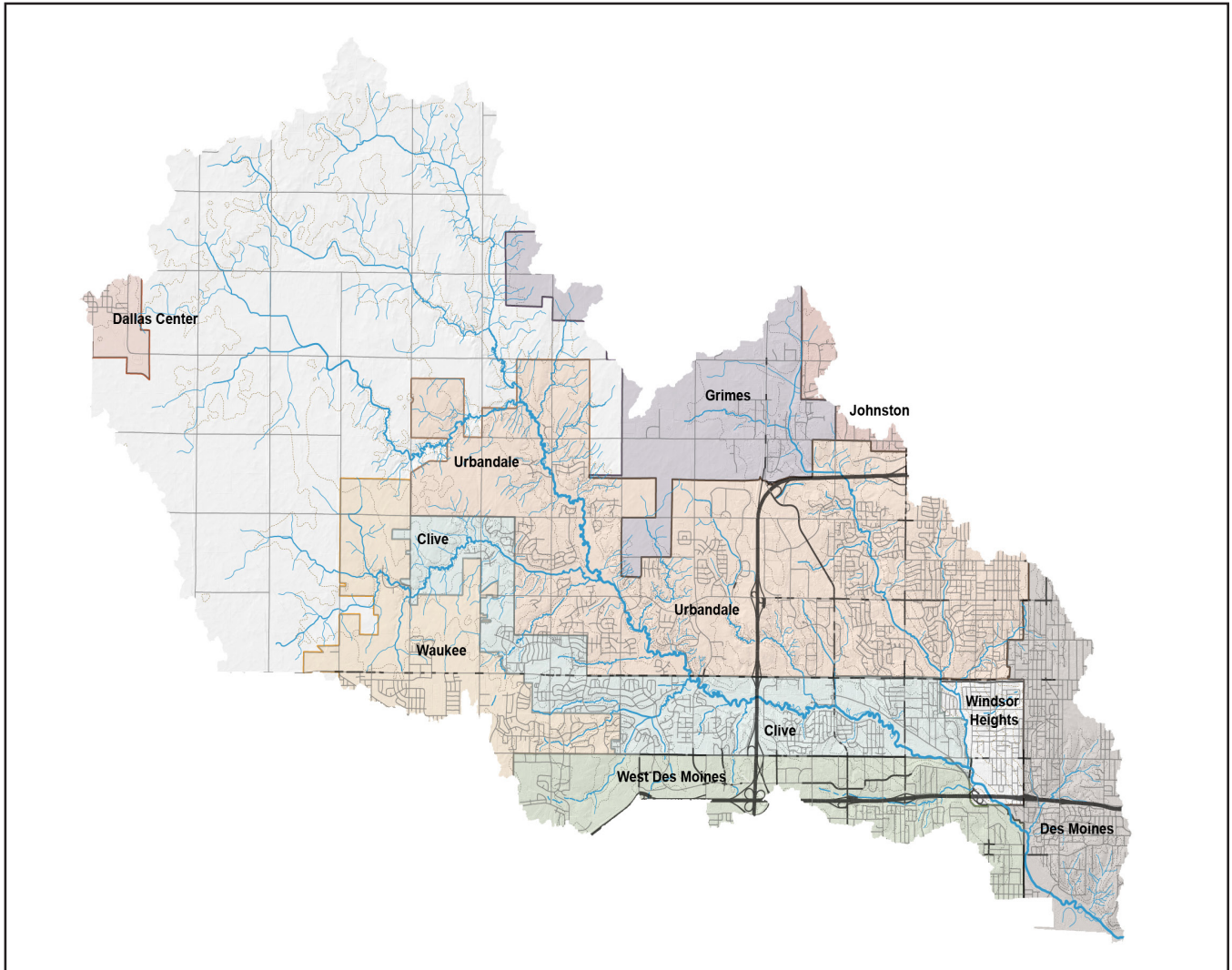
Wednesday, Feb. 17, at 9:30 a.m. -- Polk County Board of Supervisors, 111 Court Ave., Room 120, Des Moines

For more details or to comment, visit dmampo.org/walnut-creek-wma, email info@dmampo.org, or call 515-334-0075.

Walnut Creek Watershed covers more than 52,000 acres in Polk and Dallas counties and faces both flooding and water quality challenges. **Walnut Creek Watershed Management Authority (WMA)** is a coalition of local governments including Dallas County Soil and Water Conservation District, Polk County Soil and Water Conservation District, Polk County, and the cities of Clive, Dallas Center, Grimes, Johnston, Urbandale, Waukee, West Des Moines and Windsor Heights. The watershed management plan is being developed on the WMA's behalf by RDG Planning & Design, Polk County Soil and Water Conservation District and Snyder and Associates.

Des Moines Area Metropolitan Planning Organization (MPO) acts as a regional forum to ensure coordination between the public and local, state, and federal agencies in regard to planning issues and to prepare transportation plans and programs. The MPO develops both long- and short-range multimodal transportation plans, selects and approves projects for federal funding based upon regional priorities, and develops methods to reduce traffic congestion.

Walnut Creek Watershed



What is a Watershed Management Authority?

A Watershed Management Authority, also known as a WMA, is a mechanism for cities, counties, Soil and Water Conservation Districts (SWCDs) and stakeholders to cooperatively engage in watershed planning and management. The WMA is formed by a Chapter 28E Agreement, does not have taxing authority and may not acquire property through eminent domain.

Voting members of the Walnut Creek Watershed Authority:

Polk County, Clive, Dallas Center, Des Moines, Grimes, Johnston, Urbandale, Waukee, West Des Moines, Windsor Heights, Dallas County Soil and Water Conservation District, and Polk County Soil and Water Conservation District.

Other stakeholders in planning process:

Iowa Soybean Association, Iowa Agriculture Water Alliance, Des Moines Water Works, Green and Sustainable Clive, the Walnut Creek Watershed Coalition and RDG Planning & Design.