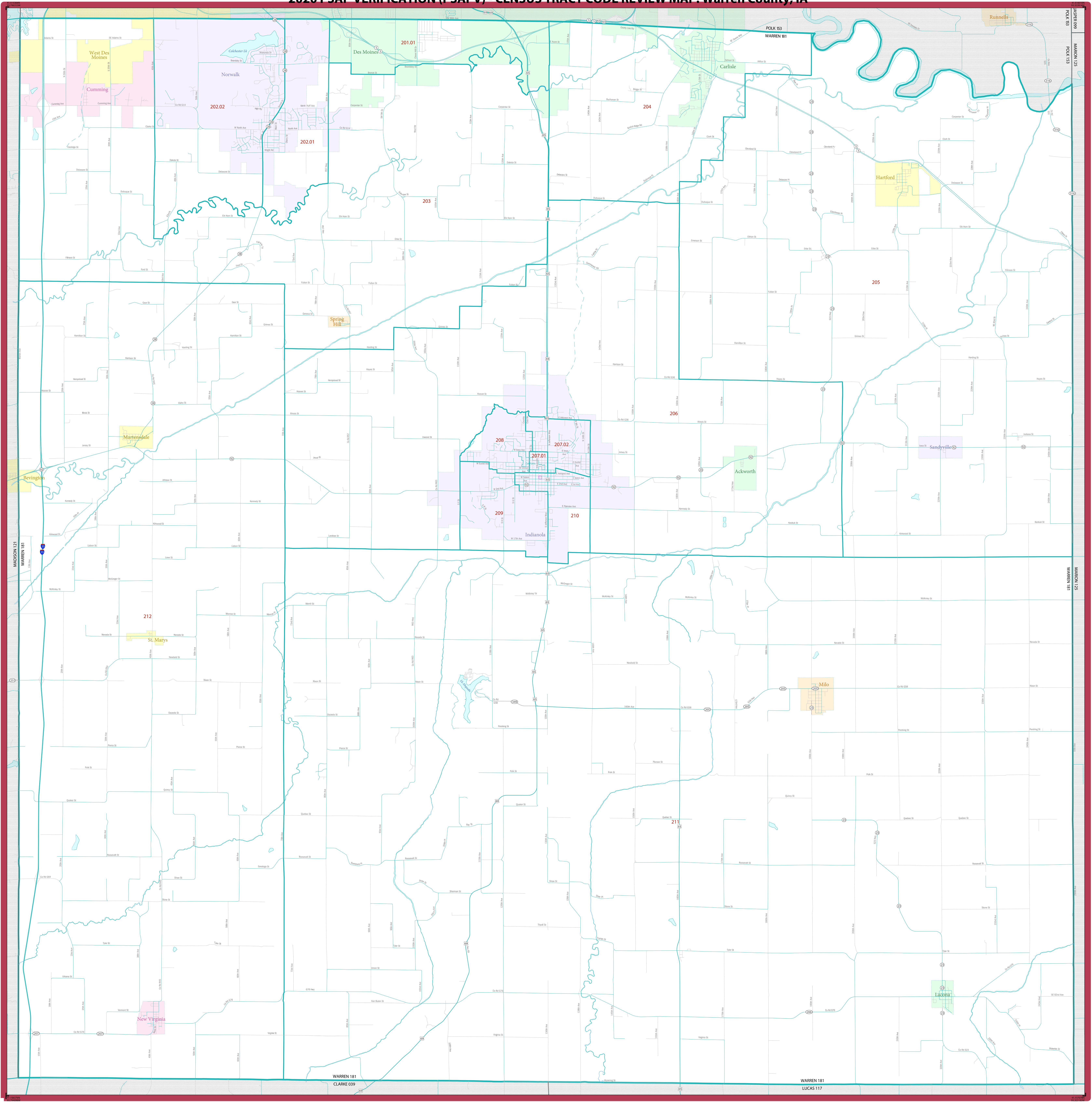


# 2020 PSAP VERIFICATION (PSAPV) - CENSUS TRACT CODE REVIEW MAP: Warren County, IA



**CENSUS TRACT CODE REVIEW MAP - LEGEND**

SYMBOL DESCRIPTION	SYMBOL	LABEL STYLE	DESCRIPTION	SYMBOL	DESCRIPTION	SYMBOL
American Indian Reservation and/or CDE Reservation, Trust Land		not labeled	Water Body		Interstate or U.S. Highway	
State (or statistically equivalent entity)		<b>NEW YORK 36</b>	College or University		Other Road	
County (or statistically equivalent entity)		<b>ERIE 029</b>	Military		4WD Trail, Stairway, Alley, Walkway, or Ferry	
Minor Civil Division (MCD) <sup>1</sup>		Lee town	National Park or Forest		Nonwater Boundary	
Consolidated City		MILFORD	Outside Subject Area			
Incorporated Place <sup>2</sup>		Davis	Inset Area			
Census Designated Place (CDP)		Cochiti				
Census Tract <sup>3</sup>		33.07				

Where state and county, and/or MCD boundaries coincide, the map shows the boundary symbol for only the highest-ranking of these boundaries. State and county names are followed by their FIPS code.

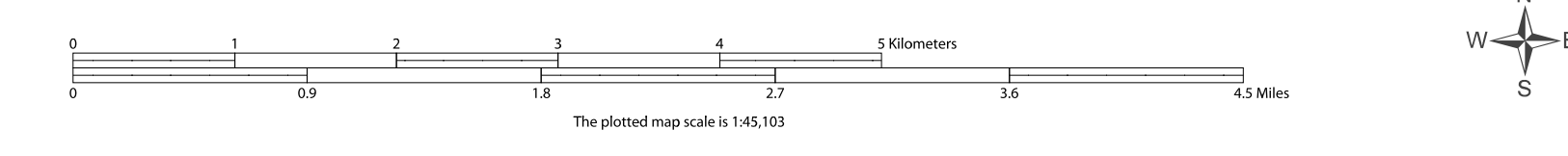
1 MCDs are symbolized and labeled only in the 12 strong MCD states: Connecticut, Maine, Massachusetts, Michigan, Minnesota, New Hampshire, New Jersey, New York, Pennsylvania, Rhode Island, Vermont, and Wisconsin.

2 Incorporated place name color corresponds to the incorporated place fill color.

3 The full census tract code consists of six digits with an implied decimal point between the fourth and fifth digits. For legibility on this map, the leading zero has been stripped and the decimal point is shown. To translate a census tract number on the map to its full code, add as many zeros as needed to the left side of the number to reach six total digits and remove the decimal point before the last two digits. Example: Census tract number on the map "33.07" represents census tract code "003307".

Due to space limitations, some road names, along with other feature and geography names on the map, may not be shown.

This map supports the verification phase of the 2020 Participant Statistical Areas Program (PSAP).



Statistical boundaries reflect planned 2020 geographies as collected through the 2020 Participant Statistical Areas Program. All legal boundaries and names are as of January 1, 2019. The boundaries shown on this map are for Census Bureau statistical data collection and tabulation purposes only; their depiction and designation for statistical purposes does not constitute a determination of jurisdictional authority or rights of ownership or entitlement.

Data Source: U.S. Census Bureau's MAINTIGER database (BAS20), November 2019  
 Created by: Geography Division, January 09, 2020

U.S. DEPARTMENT OF COMMERCE U.S. Census Bureau

Projection: Albers Equal Area Conic  
 Datum: NAD 83  
 Spheroid: GRS 80  
 1st Standard Parallel: 40 53 46  
 2nd Standard Parallel: 42 58 46  
 Central Meridian: -93 23 22  
 Latitude of Projection Origin: 40 22 31  
 False Easting: 0  
 False Northing: 0



Sheet 1 of 1 PARENT sheets  
 Total Sheets: 1 (Index 0; Parent 1; Inset 0)  
 NAME: Warren County (181)  
 ENTITY TYPE: County or statistically equivalent entity  
 ST: Iowa (19)

