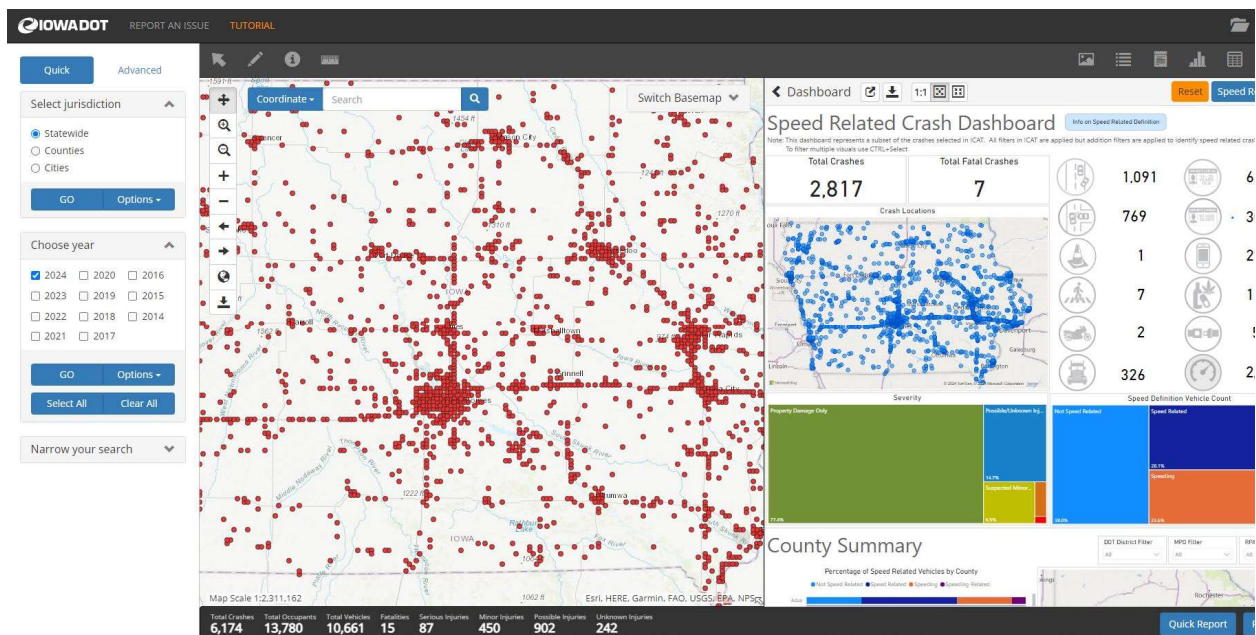


Please pass this email on to each member of your local traffic safety team. I look forward to serving you in 2024 - Theresa



New in ICAT, a Dashboard tool has been added to provide an opportunity to view data in a different manner (**see image below**). **Note** in the image below, the dashboard represents a subset of the crashes selected in **ICAT**. All filters in **ICAT** are applied but additional filters are applied to identify the preconfigured dashboard related crashes, in this example, the “Speed” dashboard has been selected.

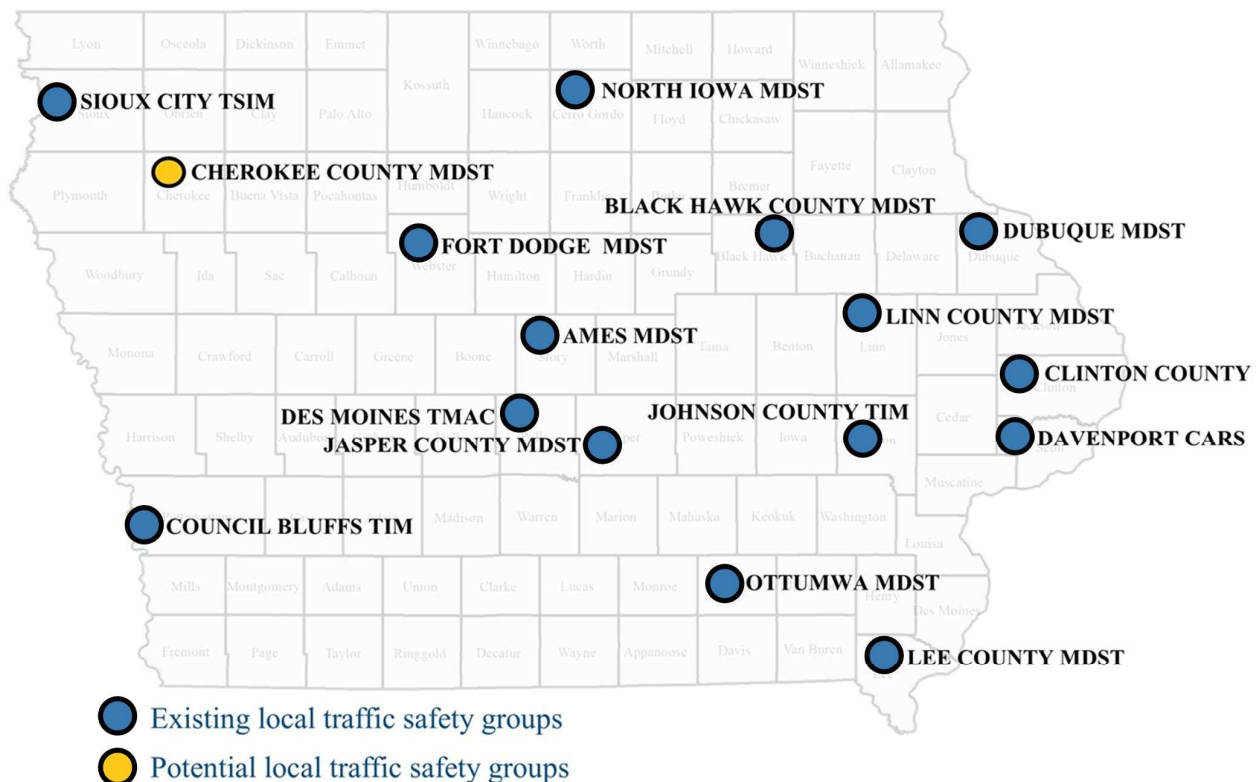


MULTI-DISCIPLINARY SAFETY TEAMS

Improving Roadway Safety Across Iowa

THE BENEFITS OF A MDST

By coordinating communication and collaborating with other stakeholders, participants gain a broader perspective on safety issues and learn best practices from professionals outside their area of expertise. This ultimately leads to the development of solutions that may not have been considered otherwise. If you are not currently a member of one of the many traffic safety groups scattered throughout Iowa, consider joining yourself or designating a representative from your agency.



CRASH DATA

Data collection efforts immediately following a crash provide a unique opportunity to help guide prevention strategies. The availability of accurately recorded crash data is important for the identification and analysis of crash trends, to determine the

contributing factors of crashes, to develop countermeasures and strategies, and to assist in the development of crash modification factors (CMFs). When data of this kind is included on a crash report, prevention professionals will use the data to better understand driver and non-motorist behaviors.

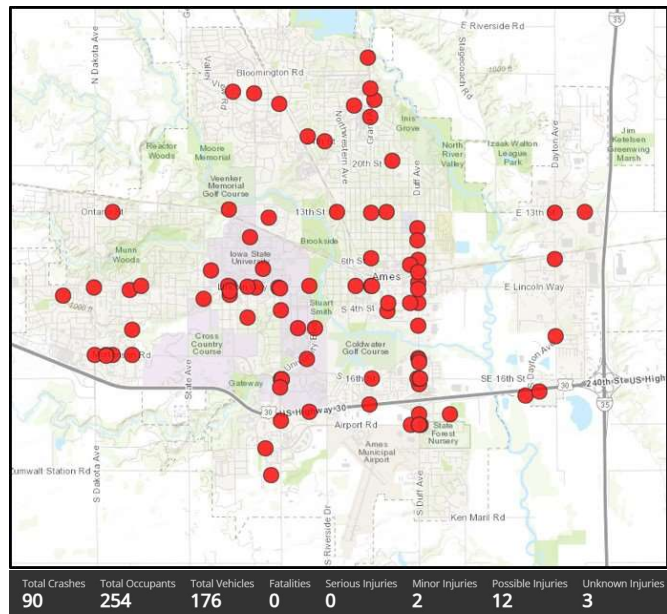
The Iowa Crash Analysis Tool (ICAT) provides a platform for users to access, query, and summarize crash data for the State of Iowa. This system was designed with local and state agency input, enabling these agencies and the research community to conduct regional and site-specific analyses of crash, driver, injury and road-related features. The system allows local law enforcement and engineers to use comprehensive state or local data to identify and mitigate roadway safety problems.

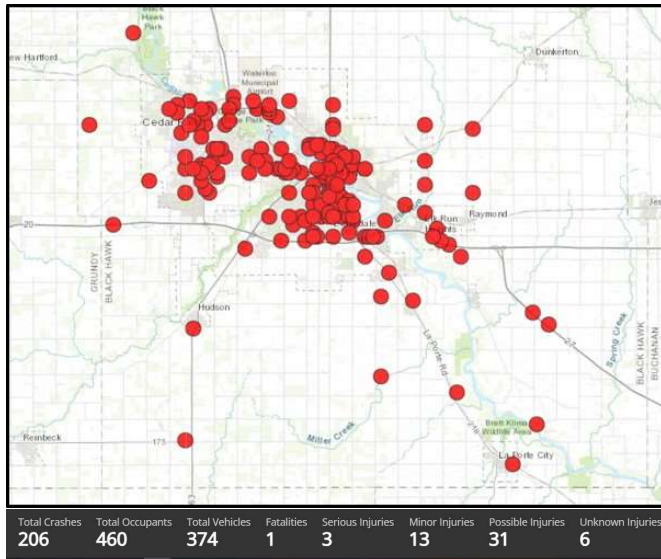
[LEARN MORE](#)

AMES

DATA SELECTED USING THE FOLLOWING CRITERIA

- **JURISDICTION:** City
- **YEAR:** 2024
- **MONTH:** January
- **CRASH COUNT:** 90

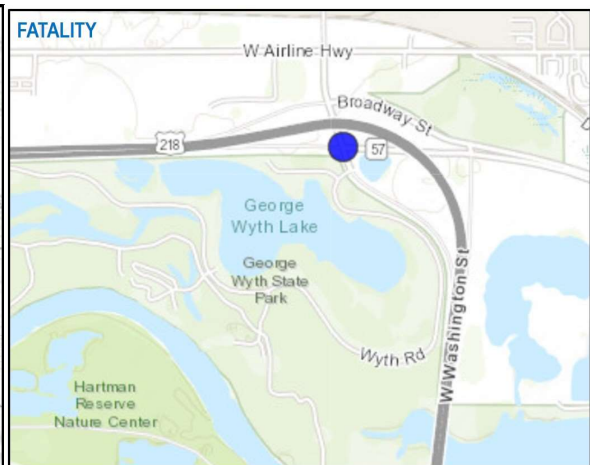




BLACK HAWK COUNTY

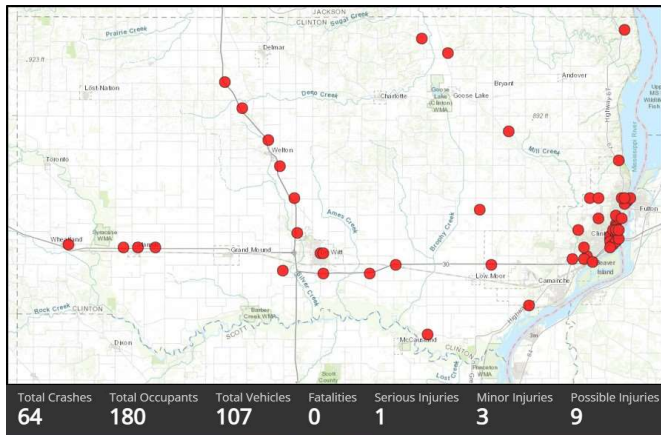
DATA SELECTED USING THE FOLLOWING CRITERIA

- **JURISDICTION:** County
- **YEAR:** 2024
- **MONTH:** January
- **CRASH COUNT:** 206



FATALITY

- **DATE:** January 10
- **MAJOR CAUSE:** Ran Traffic Signal
- **LOCATION:** Ramp US 218 S to Airport Blvd



CLINTON COUNTY

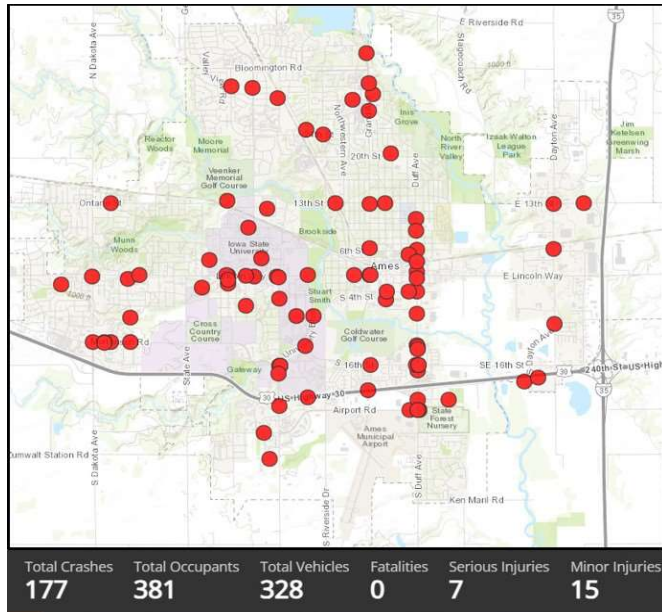
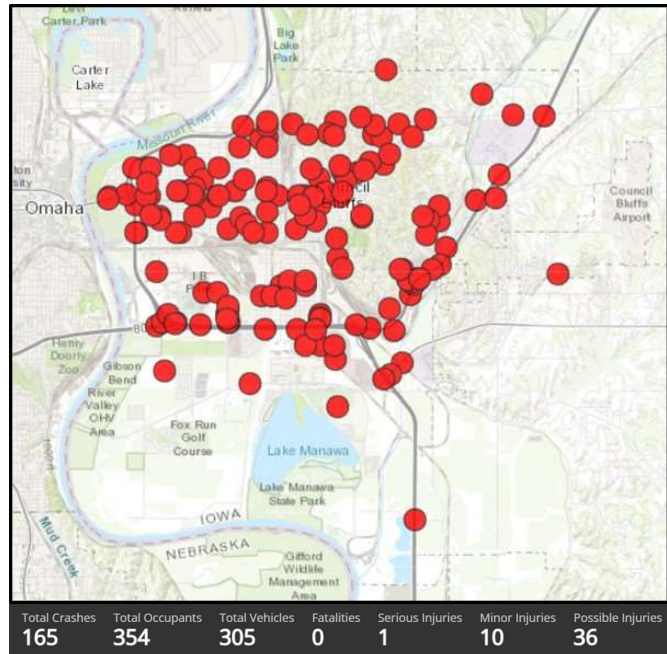
DATA SELECTED USING THE FOLLOWING CRITERIA

- **JURISDICTION:** County
- **YEAR:** 2024
- **MONTH:** January
- **CRASH COUNT:** 64

COUNCIL BLUFFS

DATA SELECTED USING THE FOLLOWING CRITERIA

- **JURISDICTION:** City
- **YEAR:** 2024
- **MONTH:** January
- **CRASH COUNT:** 165



DAVENPORT

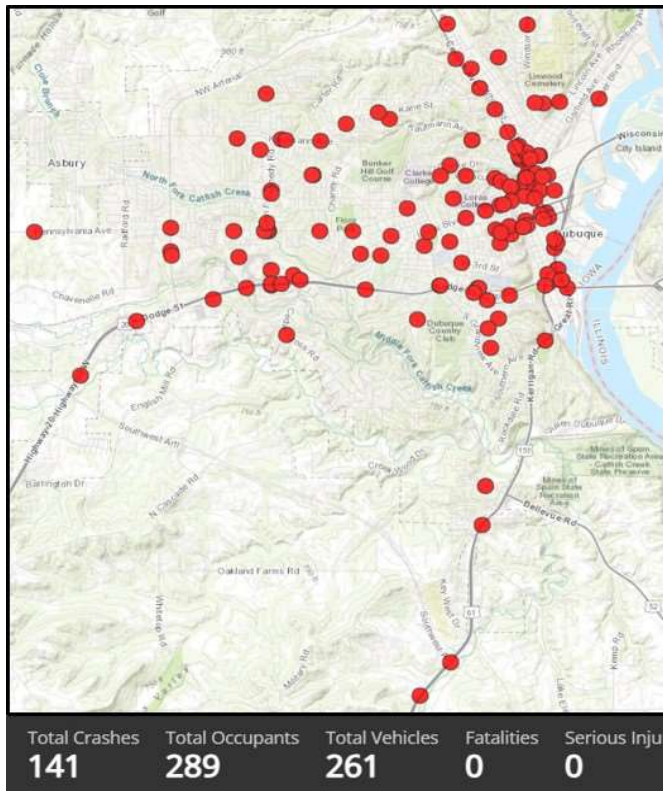
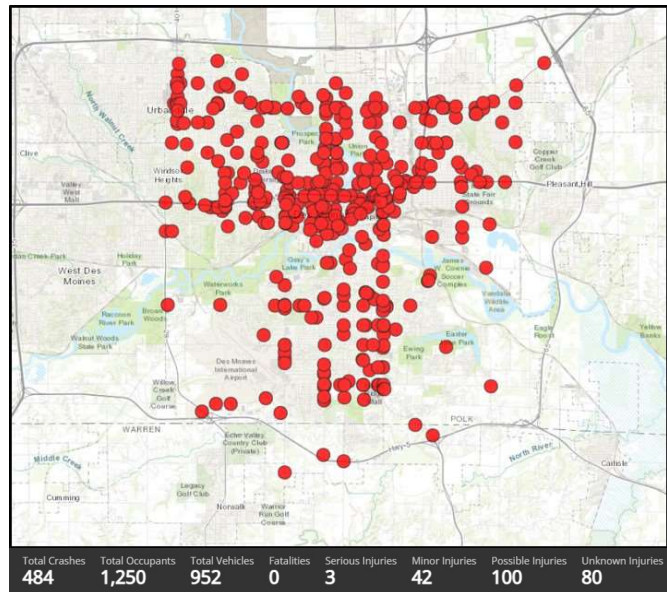
DATA SELECTED USING THE FOLLOWING CRITERIA

- **JURISDICTION:** City
- **YEAR:** 2024
- **MONTH:** January
- **CRASH COUNT:** 177

DES MOINES

DATA SELECTED USING THE FOLLOWING CRITERIA

- **JURISDICTION:** City
- **YEAR:** 2024
- **MONTH:** January
- **CRASH COUNT:** 484



DUBUQUE

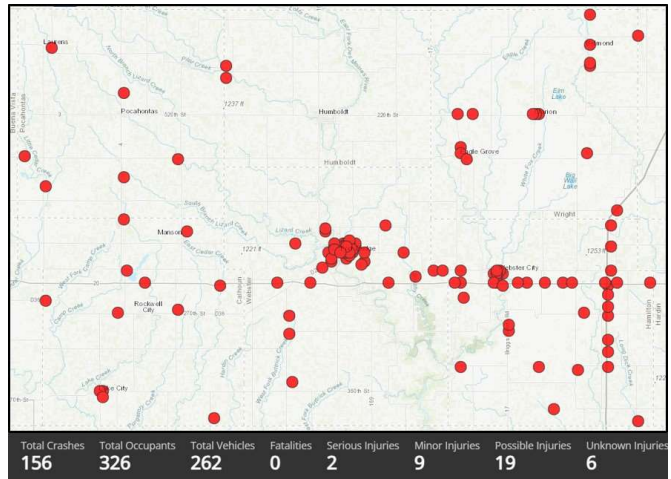
DATA SELECTED USING THE FOLLOWING CRITERIA

- **JURISDICTION:** City
- **YEAR:** 2024
- **MONTH:** January
- **CRASH COUNT:** 141

FORT DODGE

DATA SELECTED USING THE FOLLOWING CRITERIA

- **JURISDICTION:** County (Calhoun, Hamilton, Pocahontas, Webster & Wright)
- **YEAR:** 2024
- **MONTH:** January
- **CRASH COUNT:** 156



JASPER COUNTY

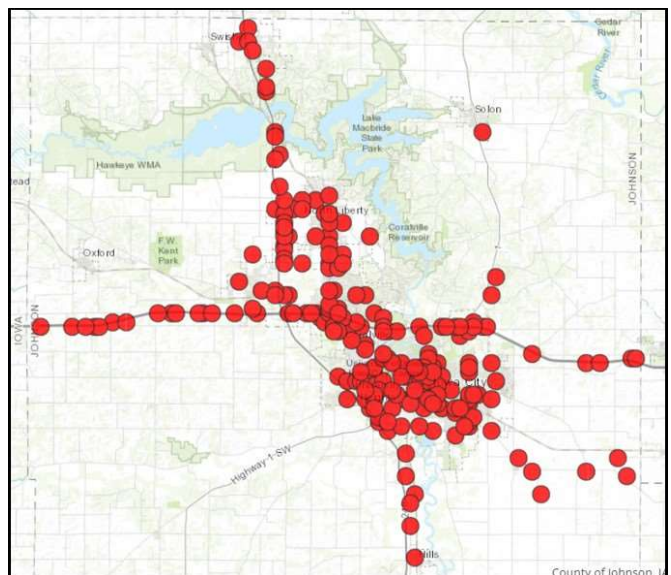
DATA SELECTED USING THE FOLLOWING CRITERIA

- **JURISDICTION:** County (Jasper & Poweshiek)
- **YEAR:** 2024
- **MONTH:** January
- **CRASH COUNT:** 106

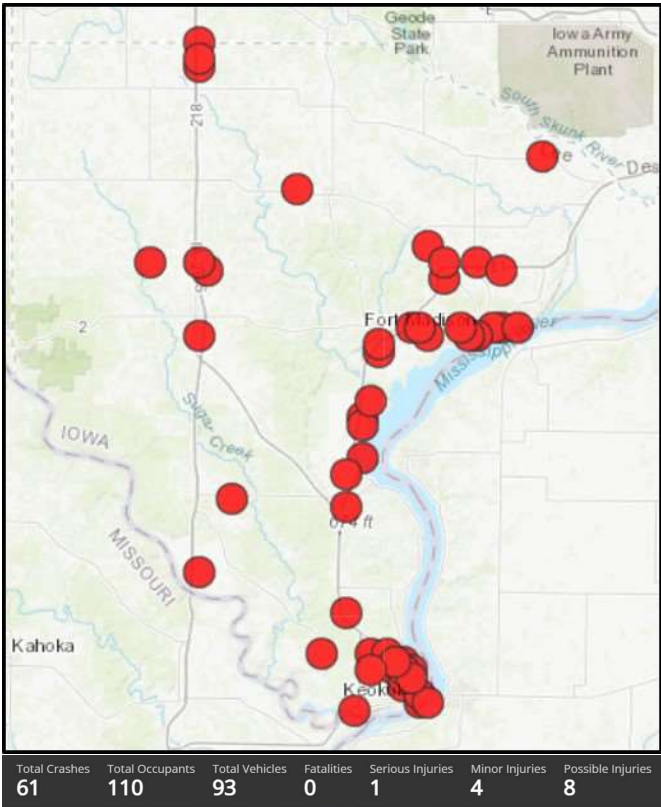
JOHNSON COUNTY

DATA SELECTED USING THE FOLLOWING CRITERIA

- **JURISDICTION:** County
- **YEAR:** 2024
- **MONTH:** January
- **CRASH COUNT:** 303



Total Crashes	Total Occupants	Total Vehicles	Fatalities	Serious Injuries	Minor Injuries	Possible Injuries
303	691	542	0	2	22	34



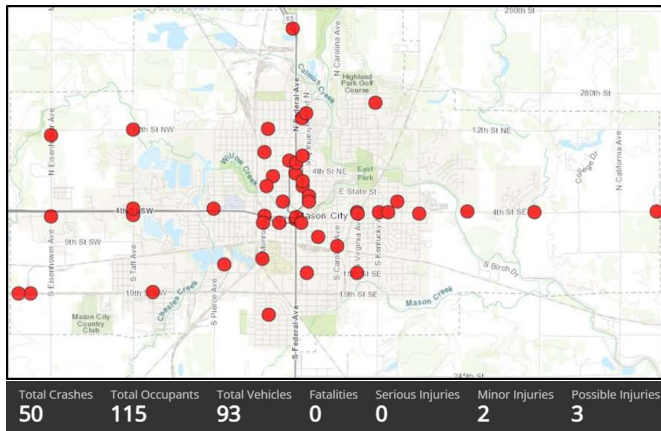
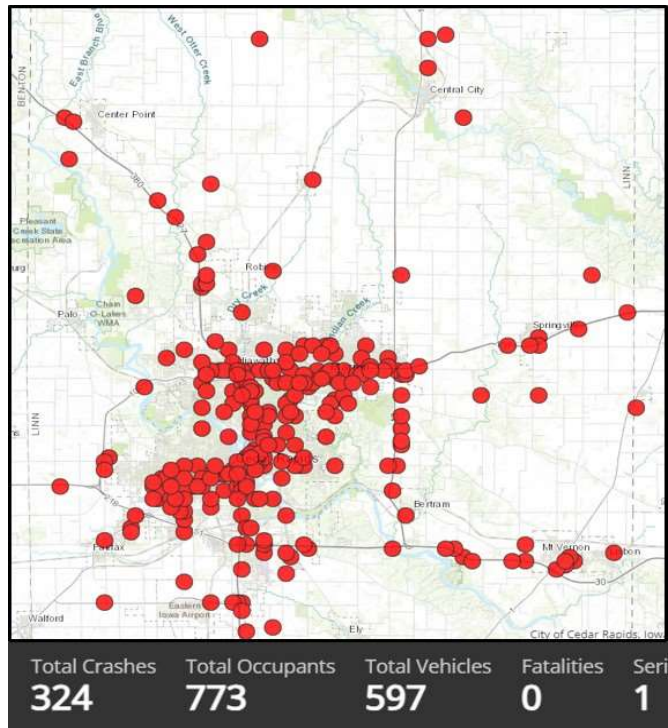
LEE COUNTY
DATA SELECTED USING THE
FOLLOWING CRITERIA

- **JURISDICTION:** County
- **YEAR:** 2024
- **MONTH:** January
- **CRASH COUNT:** 61

LINN COUNTY

DATA SELECTED USING THE FOLLOWING CRITERIA

- **JURISDICTION:** County
- **YEAR:** 2024
- **MONTH:** January
- **CRASH COUNT:** 324



NORTH IOWA

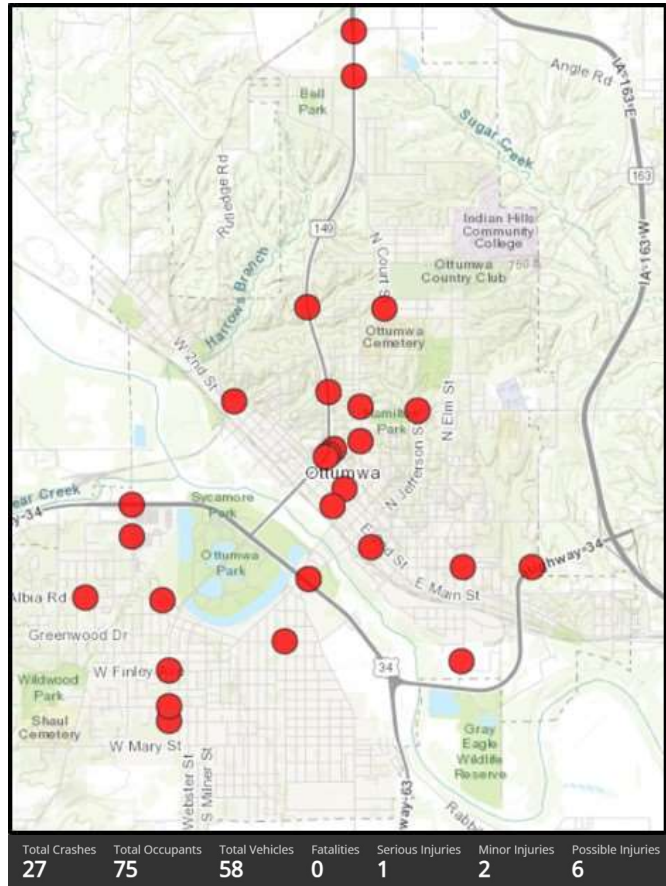
DATA SELECTED USING THE FOLLOWING CRITERIA

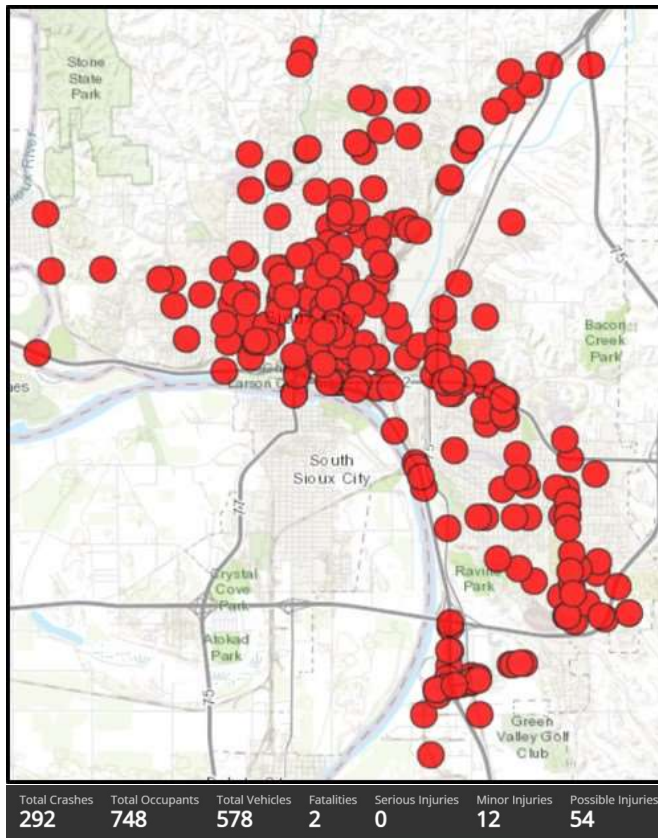
- **JURISDICTION:** City (Mason)
- **YEAR:** 2024
- **MONTH:** January
- **CRASH COUNT:** 50

OTTUMWA

DATA SELECTED USING THE FOLLOWING CRITERIA

- **JURISDICTION:** City
- **YEAR:** 2024
- **MONTH:** January
- **CRASH COUNT:** 27





SIoux CITY

DATA SELECTED USING THE FOLLOWING CRITERIA

- **JURISDICTION:** City
- **YEAR:** 2024
- **MONTH:** January
- **CRASH COUNT:** 292

FATALITIES

- **DATE:** January 24, January 25
- **MAJOR CAUSE:** Failed to Yield to Emergency Vehicle, Lost Control
- **LOCATION:** WB Gordan Drive, 6th St & W 4th St & Wesley Parkway

