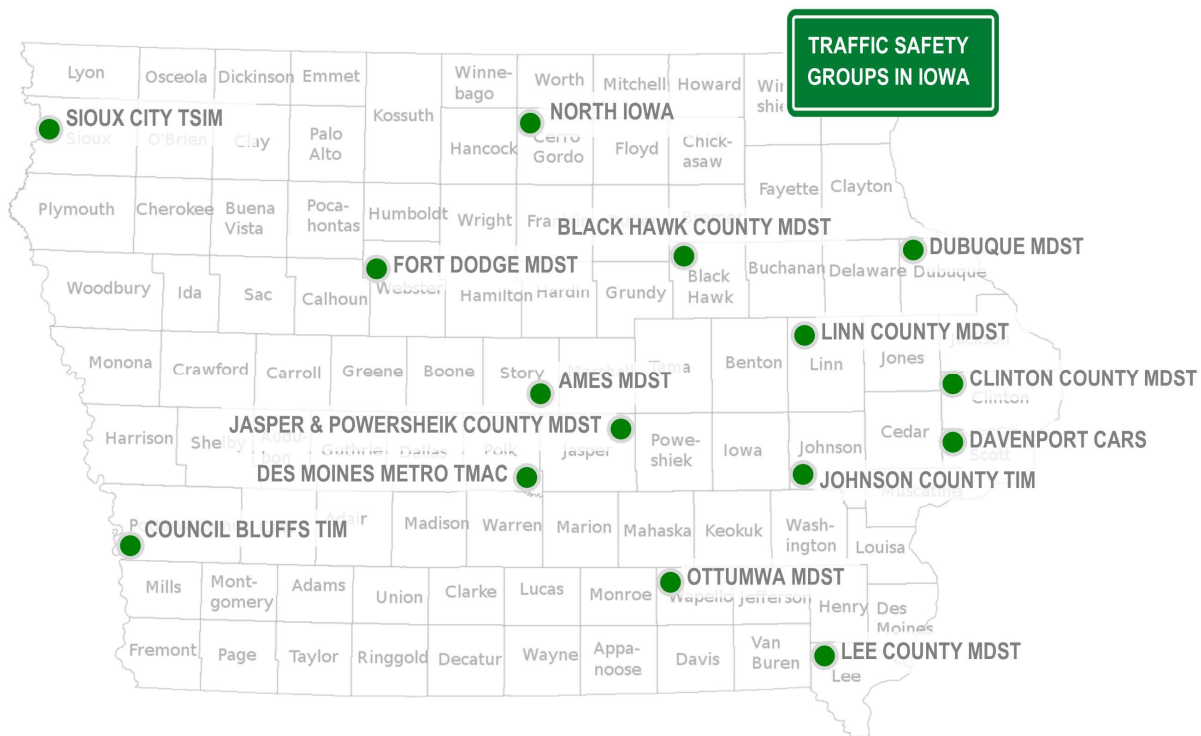




## MULTI-DISCIPLINARY SAFETY TEAMS

### IMPROVING ROADWAY SAFETY ACROSS IOWA

**Hello Friends**, in efforts to forge stronger relationships, educate one another, share resources & mitigate a safe environment for drivers on our roadways, Iowa would like to encourage new group members with an interest in traffic safety to participate in at least one of the local traffic safety groups in Iowa (see map below). If you know of a traffic safety group you would like to attend OR there may be an opportunity for regional growth & you would like to see a new group started, please let me know so we can coordinate your support. IF you are unable to attend a meeting, please consider sending an alternative agency representative in your place. We look forward to working with you & your agency in the near future...after all, **we are all in this together!** – Theresa

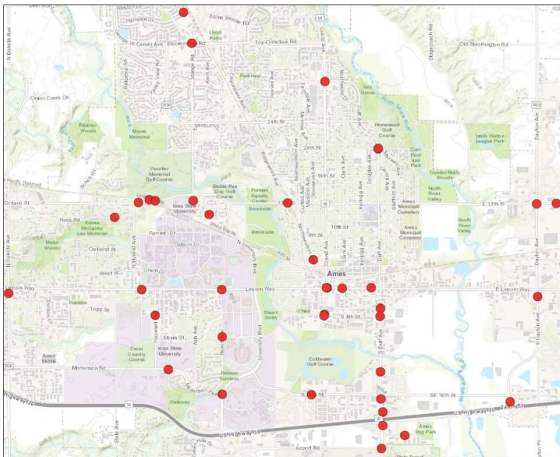


The Iowa Crash Analysis Tool (ICAT) provides a platform for users to access, query, and summarize crash data for the State of Iowa. This tool was utilized to develop the crash maps below. For more information about ICAT please contact: [Hossein Naraghi](mailto:Hossein.Naraghi@iowadot.us) [Hossein.Naraghi@iowadot.us](mailto:Hossein.Naraghi@iowadot.us)



**[CLICK HERE FOR IOWA'S CRASH ANALYSIS TOOL \(ICAT\)](#)**

## AMES MDST



**DATA SELECTED USING THE  
FOLLOWING CRITERIA**

**JURISDICTION:** City - Ames

**YEAR:** 2024

**MONTH:** February

**TOTAL CRASHES:** 40

**TOTAL FATALITIES:** 0

**CONTACT:** [amber.christian@cityofames.org](mailto:amber.christian@cityofames.org)

---

## BLACK HAWK COUNTY MDST

**DATA SELECTED USING THE  
FOLLOWING CRITERIA**

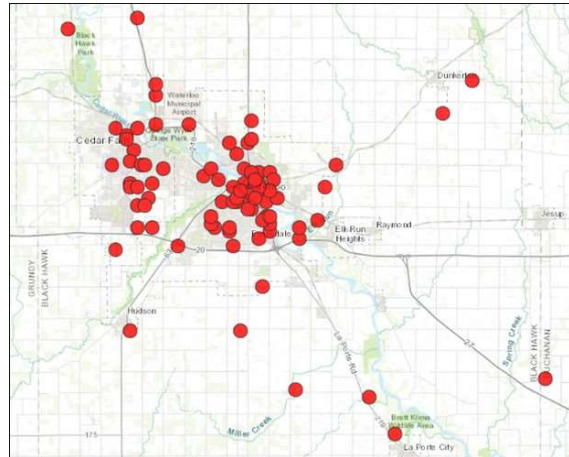
**JURISDICTION:** County - Black Hawk

**YEAR:** 2024

**MONTH:** February

**TOTAL CRASHES:** 100

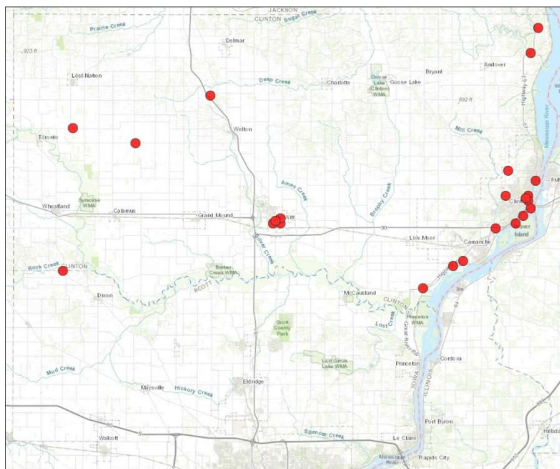
**TOTAL FATALITIES:** 0



**CONTACT:** [Newman.Abuissa@iowadot.us](mailto:Newman.Abuissa@iowadot.us)

---

**CLINTON COUNTY MDST**



**DATA SELECTED USING THE  
FOLLOWING CRITERIA**

**JURISDICTION:** County - Clinton

**YEAR:** 2024

**MONTH:** February

**TOTAL CRASHES:** 23

**TOTAL FATALITIES:** 0

**CONTACT:** [tkinney@clintoncounty-ia.gov](mailto:tkinney@clintoncounty-ia.gov)

---

**COUNCIL BLUFFS TIM**



**DATA SELECTED USING THE  
FOLLOWING CRITERIA**

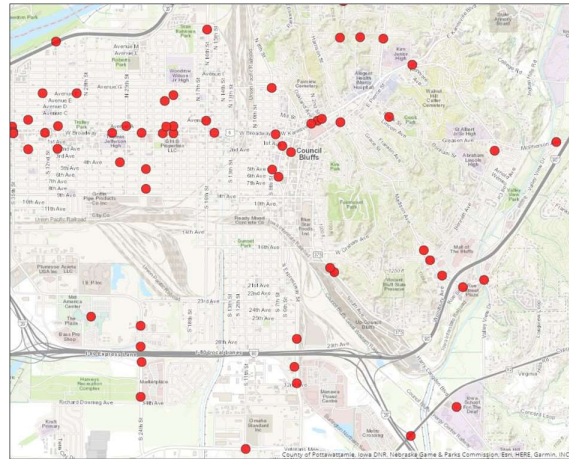
**JURISDICTION:** City -

**YEAR:** 2024

**MONTH:** February

**TOTAL CRASHES:** 69

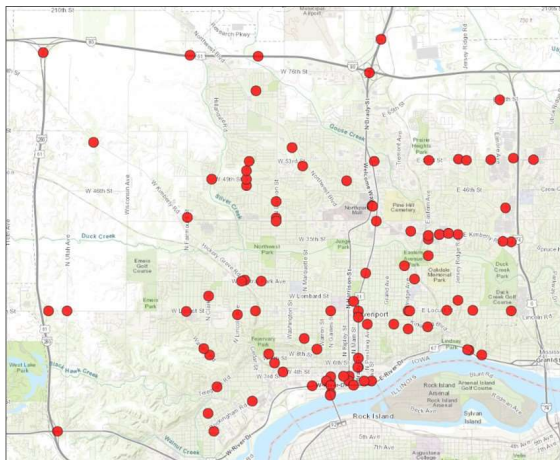
**TOTAL FATALITIES:** 0



**CONTACT:** [metro@tim.hdrinc.com](mailto:metro@tim.hdrinc.com)

---

**DAVENPORT CARS**



**DATA SELECTED USING THE  
FOLLOWING CRITERIA**

**JURISDICTION:** City - Davenport

**YEAR:** 2024

**MONTH:** February

**TOTAL CRASHES:** 99

**TOTAL FATALITIES:** 0

**CONTACT:** [nkalakuntla@bistateonline.org](mailto:nkalakuntla@bistateonline.org)

---

**DES MOINES METRO TMAC**

**DATA SELECTED USING THE  
FOLLOWING CRITERIA**

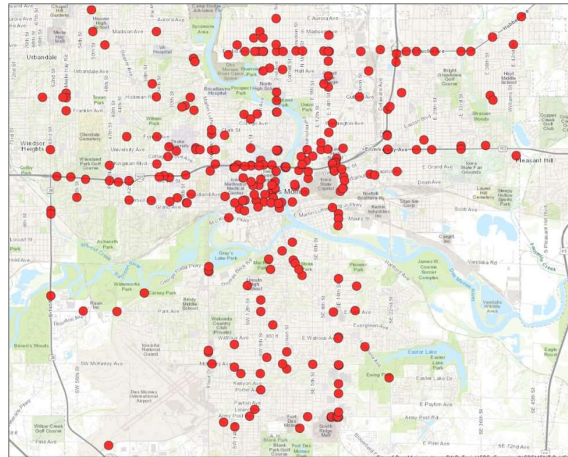
**JURISDICTION:** City - Des Moines

**YEAR:** 2024

**MONTH:** February

**TOTAL CRASHES:** 276

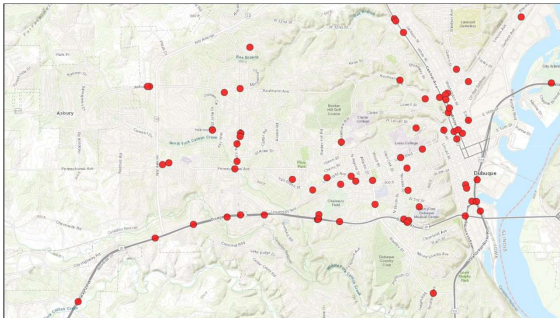
**TOTAL FATALITIES:** 0



**CONTACT:** [zchen@dmampo.org](mailto:zchen@dmampo.org)

---

**DUBUQUE MDST**



**DATA SELECTED USING THE  
FOLLOWING CRITERIA**

**JURISDICTION:** City - Dubuque

**YEAR:** 2024

**MONTH:** February

**TOTAL CRASHES:** 77

**TOTAL FATALITIES:** 0

**CONTACT:** [bschiesl@cityofdubuque.org](mailto:bschiesl@cityofdubuque.org)

---

**FORT DODGE MDST**

**DATA SELECTED USING THE  
FOLLOWING CRITERIA**

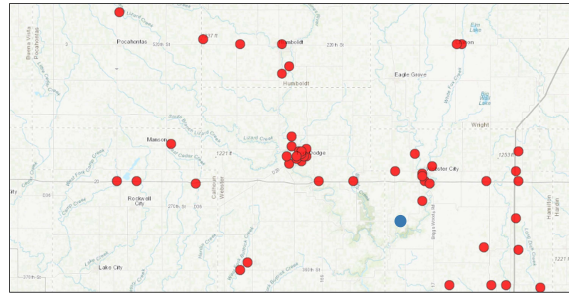
**JURISDICTION:** County - Calhoun,  
Hamilton, Humboldt, Pocahontas,  
Webster, Wright

**YEAR:** 2024

**MONTH:** February

**TOTAL CRASHES:** 62

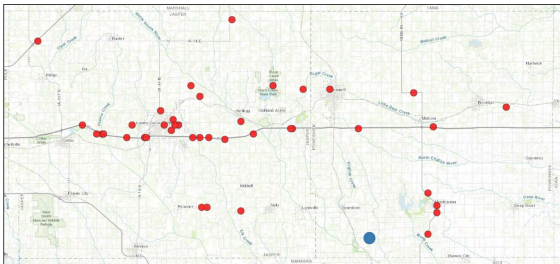
**TOTAL FATALITIES:** 1 (see blue  
marker)



**CONTACT:** [slentsch@midascog.net](mailto:slentsch@midascog.net)

---

**JASPER COUNTY MDST**



**DATA SELECTED USING THE  
FOLLOWING CRITERIA**

**JURISDICTION:** County - Jasper,  
Poweshiek

**YEAR:** 2024

**MONTH:** February

**TOTAL CRASHES:** 44

**TOTAL FATALITIES:** 1 (see blue  
marker)

**CONTACT:** [Ted.Shipley@iowadot.us](mailto:Ted.Shipley@iowadot.us)

---

## JOHNSON COUNTY TIM

### DATA SELECTED USING THE FOLLOWING CRITERIA

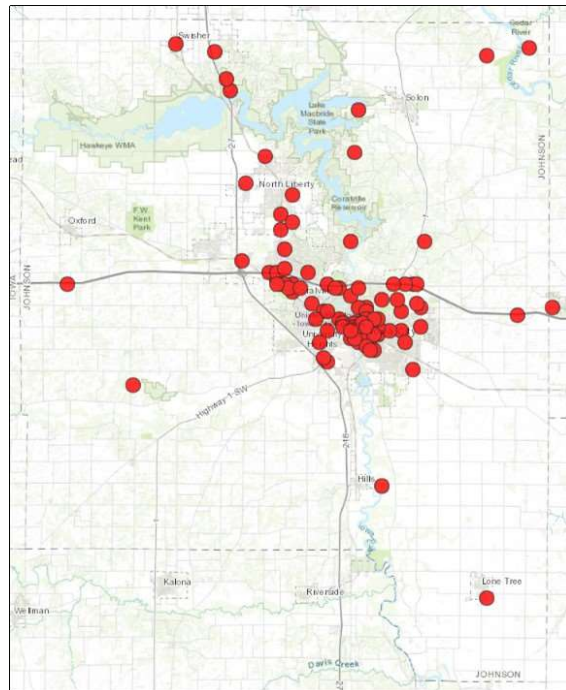
**JURISDICTION:** County - Johnson

**YEAR:** 2024

**MONTH:** February

**TOTAL CRASHES:** 110

**TOTAL FATALITIES:** 0



**CONTACT:** [Newman.Abuissa@iowadot.us](mailto:Newman.Abuissa@iowadot.us)

---

## LEE COUNTY MDST

### DATA SELECTED USING THE FOLLOWING CRITERIA

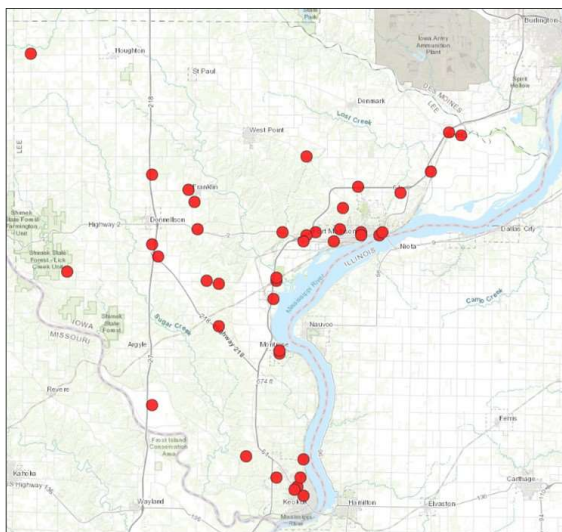
**JURISDICTION:** County - Lee

**YEAR:** 2024

**MONTH:** February

**TOTAL CRASHES:** 42

**TOTAL FATALITIES:** 0





**CONTACT:** [bhull@LeeCounty.org](mailto:bhull@LeeCounty.org)

---

## LINN COUNTY MDST

**DATA SELECTED USING THE  
FOLLOWING CRITERIA**

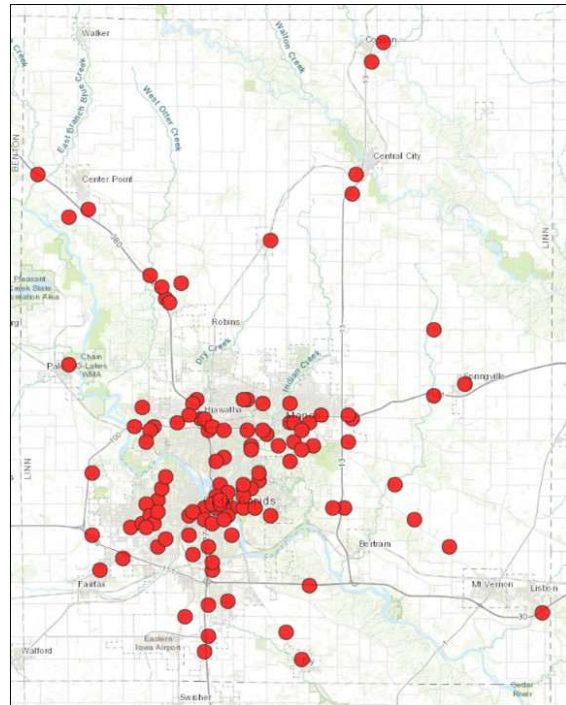
**JURISDICTION:** County - Linn

**YEAR:** 2024

**MONTH:** February

**TOTAL CRASHES:** 125

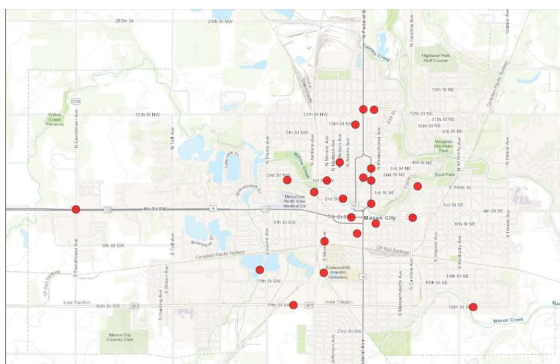
**TOTAL FATALITIES:** 0



**CONTACT:** [Newman.Abuissa@iowadot.us](mailto:Newman.Abuissa@iowadot.us)

---

## NORTH IOWA MDST



**DATA SELECTED USING THE  
FOLLOWING CRITERIA**

**JURISDICTION:** City - Mason

**YEAR:** 2024

**MONTH:** February

**TOTAL CRASHES: 23**  
**TOTAL FATALITIES: 0**

**CONTACT:** [cdiggins@niacog.org](mailto:cdiggins@niacog.org)

---

## OTTUMWA MDST

**DATA SELECTED USING THE  
FOLLOWING CRITERIA**

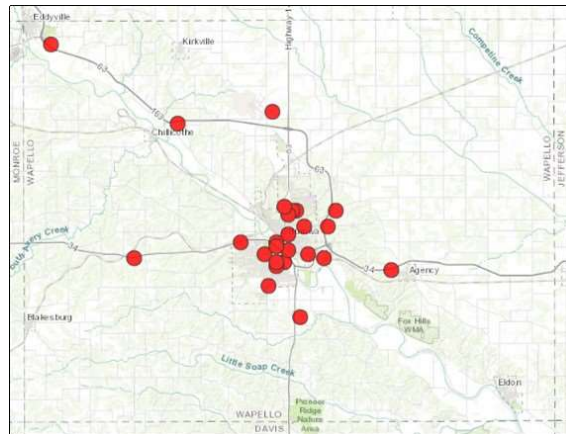
**JURISDICTION:** County - Wapello

**YEAR:** 2024

**MONTH:** February

**TOTAL CRASHES:** 28 (OTTUMWA - 19)

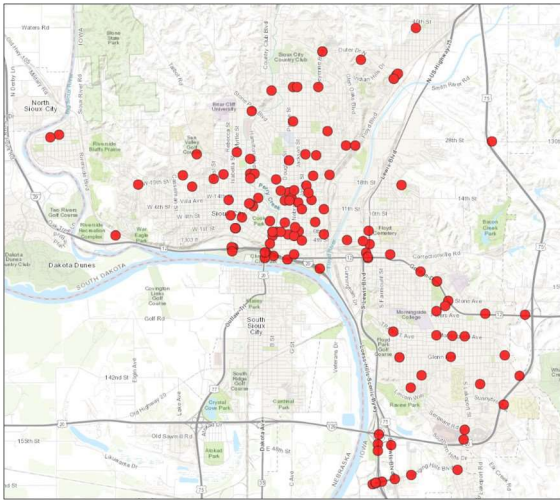
**TOTAL FATALITIES:** 0



**CONTACT:** [ema@wapellocounty.org](mailto:ema@wapellocounty.org)

---

## SIOUX CITY TSIM



## DATA SELECTED USING THE FOLLOWING CRITERIA

**JURISDICTION:** City - Sioux

**YEAR:** 2024

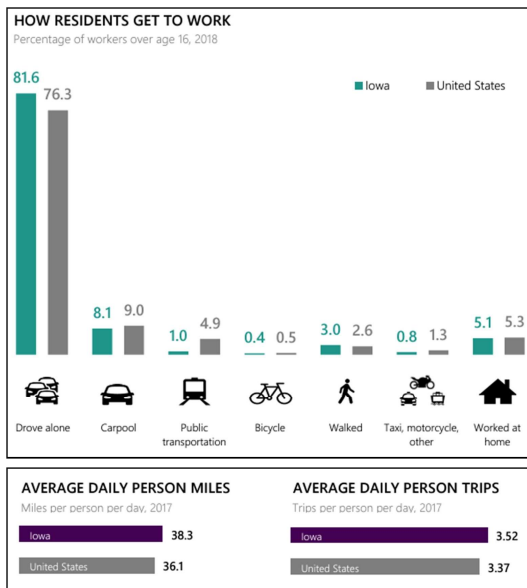
**MONTH:** February

**TOTAL CRASHES:** 134

**TOTAL FATALITIES:** 0

**CONTACT:** [bethany.waltersdorf@iowadot.us](mailto:bethany.waltersdorf@iowadot.us)

## DID YOU KNOW...?



## IOWA TRANSPORTATION BY THE NUMBERS

**POPULATION:** 3.2m

**LICENSED DRIVERS:** 2.3m

**REGISTERED VEHICLES:** 3.8m

**MILES OF PUBLIC ROAD:** 114,745

**MILES OF WATERWAY:** 490

**BRIDGES:** 24,123

**MAJOR AIRPORTS:** 7

**NUMBER OF MPOs:** 9

Source: [www.bts.dot.gov](http://www.bts.dot.gov)

## THE BENEFITS OF A MDST

*By coordinating communication and collaborating with other stakeholders, participants gain a broader perspective on safety issues and learn best practices from professionals outside their area of expertise. This ultimately leads to the development of solutions that may not have been considered otherwise. If you are not currently a member of one of the many traffic safety groups scattered throughout Iowa, consider joining yourself or designating a representative from your agency.*



THANK YOU FOR EVERYTHING YOU  
DO!





To learn more about the MDST program, click [here](#) OR please contact [Theresa Litteral](#).

*Copyright © \*2024\* \*Iowa State University\*, All rights reserved.*

**Institute for Transportation**  
2711 S Loop Drive / Suite 4700 / Ames, IA 50010

Want to join? [Subscribe to this newsletter](#).

Want to change how you receive these emails?  
[Update your preferences](#) or [unsubscribe from this list](#).

---