




# DES MOINES AREA MPO

## Transportation Technical Committee Meeting

May 2, 2024

# APPROVAL OF AGENDA

# May 2, 2024, Agenda



1. Call to Order
2. VOTE: Approval of Agenda
3. VOTE: Approval of Meeting Minutes
4. PRESENTATION: Polk County Project Updates
5. REPORT and VOTE: *FY 2025 Unified Planning Work Program & Budget Final Draft*
6. REPORT: Mobilizing Tomorrow Update
7. REPORT and OPTIONAL VOTE: Carbon Reduction Program Funding Process
8. REPORT: Available Funding Opportunities
9. REPORT: Upcoming Events
10. Other Non-Action Items of Interest to the Committee
11. Next Meeting Date – June 6, 2024 – 9:30 a.m.
12. Adjournment

# APPROVAL OF MEETING MINUTES

# PRESENTATION: POLK COUNTY PROJECTS



# POLK COUNTY PROJECT UPDATES

MPO Technical Committee – May 2, 2024

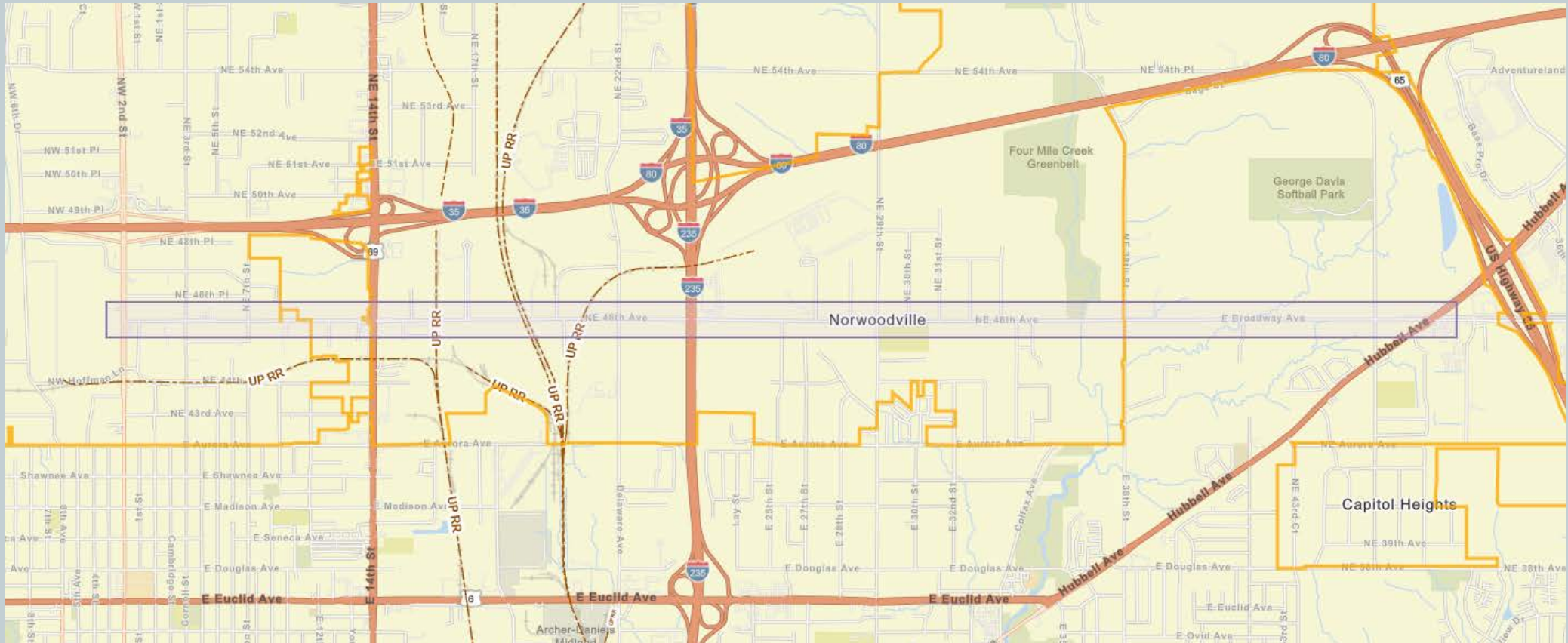
MPO Policy Committee – May 16, 2024

# PROJECTS

- Broadway Avenue Project
- Easton Boulevard Project
- Highway 141 and Highway 415 Interchange Project

# BROADWAY AVENUE PROJECT

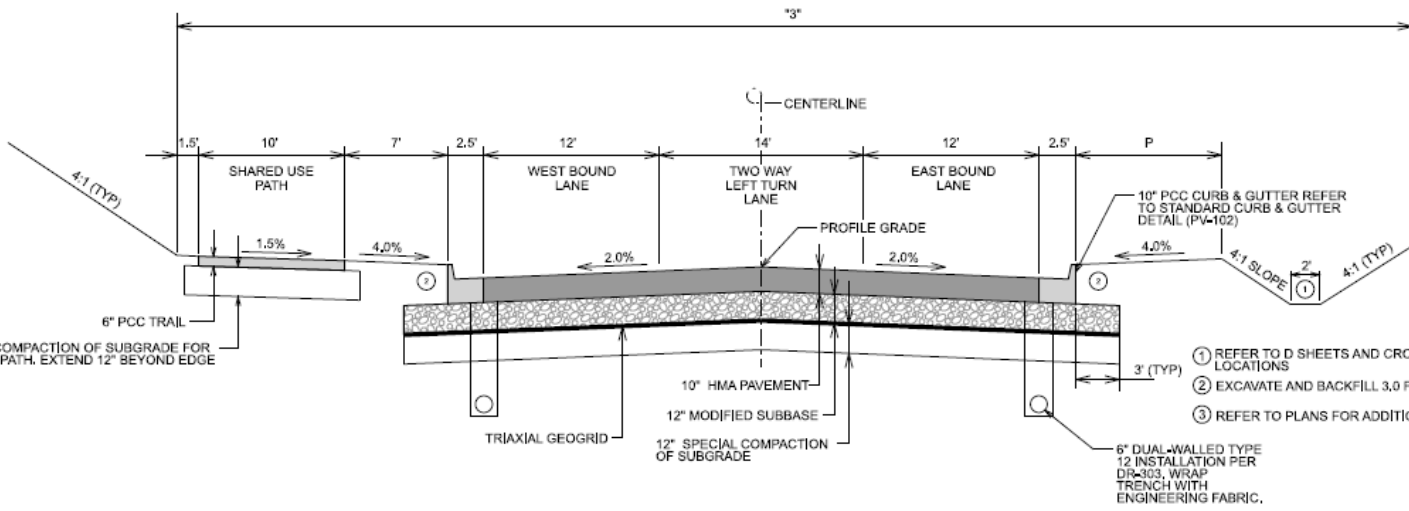
Converting a five mile two-lane rural roadway cross section roadway into a three-lane urban cross section





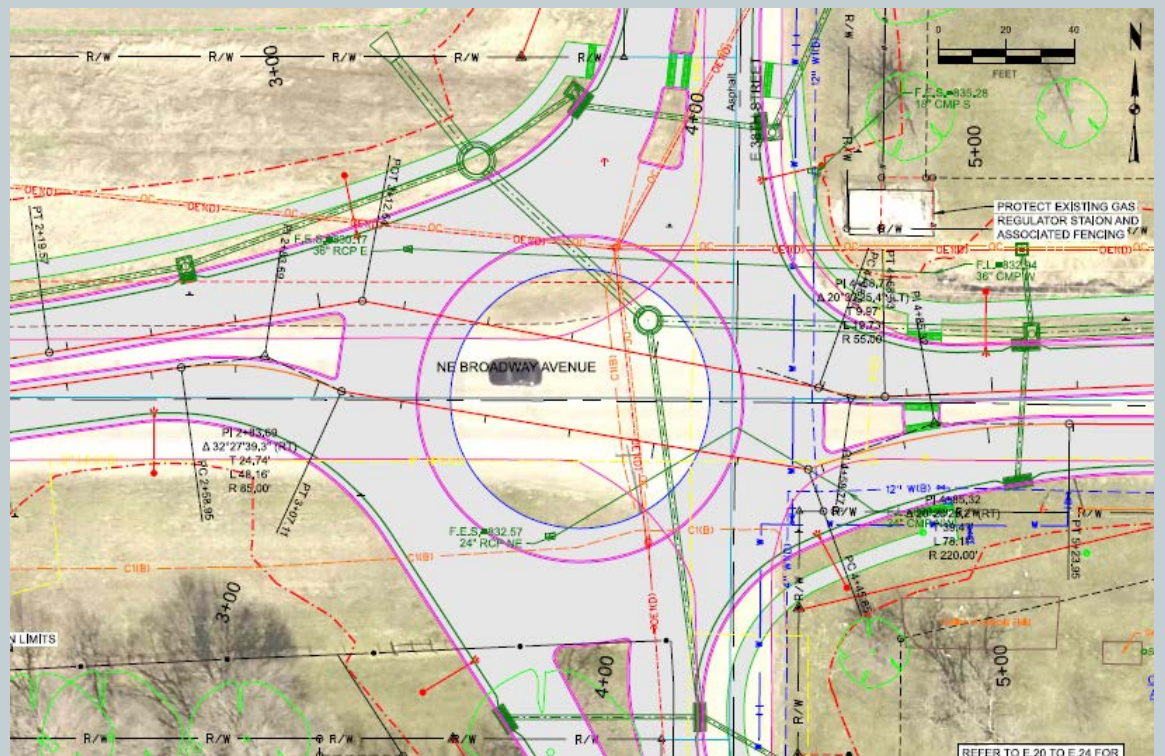
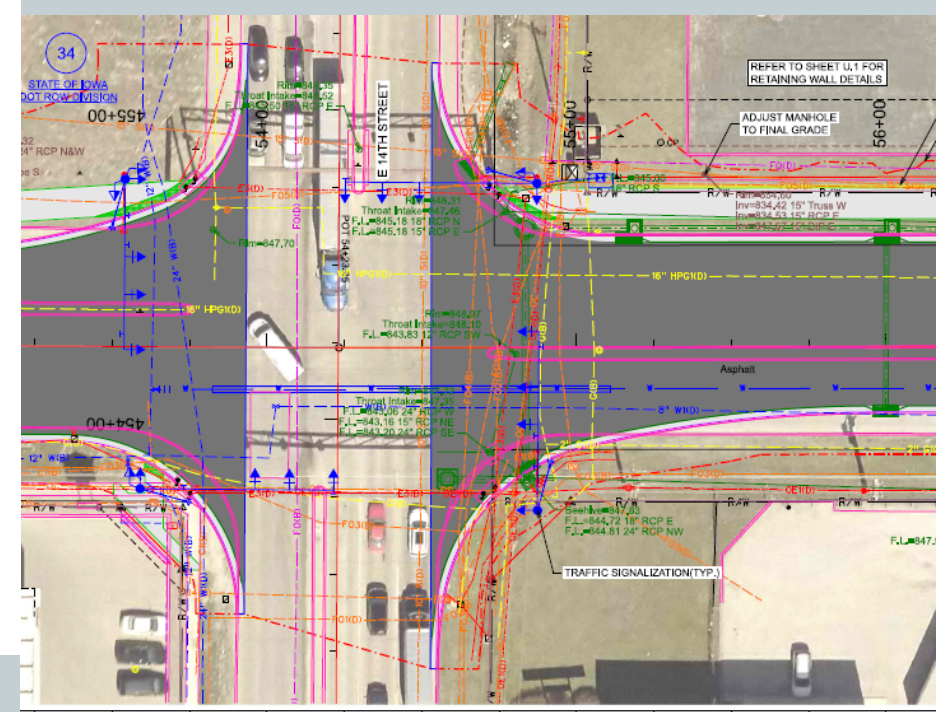
## PROJECT FEATURES

- Railroad Bridge - replace existing at grade uneven crossing.
- Ten foot wide trail on west end connects to Gay Lea Wilson Trail at Fourmile Creek
  - Transitions to five sidewalk on east end – east of Fourmile Creek.
- Street/ trail/ sidewalk lighting on the entire corridor– a first for Polk County.
- Add additional through and turn lanes at major intersections
  - IA-415 (NW 2<sup>nd</sup>)
  - US 69 (NE 14<sup>th</sup>)
  - US 6 (Hubbell)



- ① REFER TO D SHEETS AND CROSS SECTIONS FOR DITCH LOCATIONS
- ② EXCAVATE AND BACKFILL 3.0 FT
- ③ REFER TO PLANS FOR ADDITIONAL INFORMATION

### BROADWAY AVENUE - 3 LANE SECTION WITH TRAIL



846.0	846.7	847.6	848.4	849.2	849.9	850.6	851.3	852.0	852.7	853.4	854.1	854.8	855.5	856.2	856.9	857.6	858.3	859.0	859.7	860.4	861.1	861.8	862.5	863.2	863.9	864.6	865.3	866.0	866.7	867.4	868.1	868.8	869.5	870.2	870.9	871.6	872.3	873.0	873.7	874.4	875.1	875.8	876.5	877.2	877.9	878.6	879.3	880.0	880.7	881.4	882.1	882.8	883.5	884.2	884.9	885.6	886.3	887.0	887.7	888.4	889.1	889.8	890.5	891.2	891.9	892.6	893.3	894.0	894.7	895.4	896.1	896.8	897.5	898.2	898.9	899.6	900.3	901.0	901.7	902.4	903.1	903.8	904.5	905.2	905.9	906.6	907.3	908.0	908.7	909.4	910.1	910.8	911.5	912.2	912.9	913.6	914.3	915.0	915.7	916.4	917.1	917.8	918.5	919.2	919.9	920.6	921.3	922.0	922.7	923.4	924.1	924.8	925.5	926.2	926.9	927.6	928.3	929.0	929.7	930.4	931.1	931.8	932.5	933.2	933.9	934.6	935.3	936.0	936.7	937.4	938.1	938.8	939.5	940.2	940.9	941.6	942.3	943.0	943.7	944.4	945.1	945.8	946.5	947.2	947.9	948.6	949.3	950.0	950.7	951.4	952.1	952.8	953.5	954.2	954.9	955.6	956.3	957.0	957.7	958.4	959.1	959.8	960.5	961.2	961.9	962.6	963.3	964.0	964.7	965.4	966.1	966.8	967.5	968.2	968.9	969.6	970.3	971.0	971.7	972.4	973.1	973.8	974.5	975.2	975.9	976.6	977.3	978.0	978.7	979.4	980.1	980.8	981.5	982.2	982.9	983.6	984.3	985.0	985.7	986.4	987.1	987.8	988.5	989.2	989.9	990.6	991.3	992.0	992.7	993.4	994.1	994.8	995.5	996.2	996.9	997.6	998.3	999.0	999.7	1000.4	1001.1	1001.8	1002.5	1003.2	1003.9	1004.6	1005.3	1006.0	1006.7	1007.4	1008.1	1008.8	1009.5	1010.2	1010.9	1011.6	1012.3	1013.0	1013.7	1014.4	1015.1	1015.8	1016.5	1017.2	1017.9	1018.6	1019.3	1020.0	1020.7	1021.4	1022.1	1022.8	1023.5	1024.2	1024.9	1025.6	1026.3	1027.0	1027.7	1028.4	1029.1	1029.8	1030.5	1031.2	1031.9	1032.6	1033.3	1034.0	1034.7	1035.4	1036.1	1036.8	1037.5	1038.2	1038.9	1039.6	1040.3	1041.0	1041.7	1042.4	1043.1	1043.8	1044.5	1045.2	1045.9	1046.6	1047.3	1048.0	1048.7	1049.4	1050.1	1050.8	1051.5	1052.2	1052.9	1053.6	1054.3	1055.0	1055.7	1056.4	1057.1	1057.8	1058.5	1059.2	1059.9	1060.6	1061.3	1062.0	1062.7	1063.4	1064.1	1064.8	1065.5	1066.2	1066.9	1067.6	1068.3	1069.0	1069.7	1070.4	1071.1	1071.8	1072.5	1073.2	1073.9	1074.6	1075.3	1076.0	1076.7	1077.4	1078.1	1078.8	1079.5	1080.2	1080.9	1081.6	1082.3	1083.0	1083.7	1084.4	1085.1	1085.8	1086.5	1087.2	1087.9	1088.6	1089.3	1090.0	1090.7	1091.4	1092.1	1092.8	1093.5	1094.2	1094.9	1095.6	1096.3	1097.0	1097.7	1098.4	1099.1	1099.8	1100.5	1101.2	1101.9	1102.6	1103.3	1104.0	1104.7	1105.4	1106.1	1106.8	1107.5	1108.2	1108.9	1109.6	1110.3	1111.0	1111.7	1112.4	1113.1	1113.8	1114.5	1115.2	1115.9	1116.6	1117.3	1118.0	1118.7	1119.4	1120.1	1120.8	1121.5	1122.2	1122.9	1123.6	1124.3	1125.0	1125.7	1126.4	1127.1	1127.8	1128.5	1129.2	1129.9	1130.6	1131.3	1132.0	1132.7	1133.4	1134.1	1134.8	1135.5	1136.2	1136.9	1137.6	1138.3	1139.0	1139.7	1140.4	1141.1	1141.8	1142.5	1143.2	1143.9	1144.6	1145.3	1146.0	1146.7	1147.4	1148.1	1148.8	1149.5	1150.2	1150.9	1151.6	1152.3	1153.0	1153.7	1154.4	1155.1	1155.8	1156.5	1157.2	1157.9	1158.6	1159.3	1160.0	1160.7	1161.4	1162.1	1162.8	1163.5	1164.2	1164.9	1165.6	1166.3	1167.0	1167.7	1168.4	1169.1	1169.8	1170.5	1171.2	1171.9	1172.6	1173.3	1174.0	1174.7	1175.4	1176.1	1176.8	1177.5	1178.2	1178.9	1179.6	1180.3	1181.0	1181.7	1182.4	1183.1	1183.8	1184.5	1185.2	1185.9	1186.6	1187.3	1188.0	1188.7	1189.4	1190.1	1190.8	1191.5	1192.2	1192.9	1193.6	1194.3	1195.0	1195.7	1196.4	1197.1	1197.8	1198.5	1199.2	1199.9	1200.6	1201.3	1202.0	1202.7	1203.4	1204.1	1204.8	1205.5	1206.2	1206.9	1207.6	1208.3	1209.0	1209.7	1210.4	1211.1	1211.8	1212.5	1213.2	1213.9	1214.6	1215.3	1216.0	1216.7	1217.4	1218.1	1218.8	1219.5	1220.2	1220.9	1221.6	1222.3	1223.0	1223.7	1224.4	1225.1	1225.8	1226.5	1227.2	1227.9	1228.6	1229.3	1230.0	1230.7	1231.4	1232.1	1232.8	1233.5	1234.2	1234.9	1235.6	1236.3	1237.0	1237.7	1238.4	1239.1	1239.8	1240.5	1241.2	1241.9	1242.6	1243.3	1244.0	1244.7	1245.4	1246.1	1246.8	1247.5	1248.2	1248.9	1249.6	1250.3	1251.0	1251.7	1252.4	1253.1	1253.8	1254.5	1255.2	1255.9	1256.6	1257.3	1258.0	1258.7	1259.4	1260.1	1260.8	1261.5	1262.2	1262.9	1263.6	1264.3	1265.0	1265.7	1266.4	1267.1	1267.8	1268.5	1269.2	1269.9	1270.6	1271.3	1272.0	1272.7	1273.4	1274.1	1274.8	1275.5	1276.2	1276.9	1277.6	1278.3	1279.0	1279.7	1280.4	1281.1	1281.8	1282.5	1283.2	1283.9	1284.6	1285.3	1286.0	1286.7	1287.4	1288.1	1288.8	1289.5	1290.2	1290.9	1291.6	1292.3	1293.0	1293.7	1294.4	1295.1	1295.8	1296.5	1297.2	1297.9	1298.6	1299.3	1299.9	1300.6	1301.3	1302.0	1302.7	1303.4	1304.1	1304.8	1305.5	1306.2	1306.9	1307.6	1308.3	1309.0	1309.7	1310.4	1311.1	1311.8	1312.5	1313.2	1313.9	1314.6	1315.3	1316.0	1316.7	1317.4	1318.1	1318.8	1319.5	1320.2	1320.9	1321.6	1322.3	1323.0	1323.7	1324.4	1325.1	1325.8	1326.5	1327.2	1327.9	1328.6	1329.3	1330.0	1330.7	1331.4	1332.1	1332.8	1333.5	1334.2	1334.9	1335.6	1336.3	1337.0	1337.7	1338.4	1339.1	1339.8	1340.5	1341.2	1341.9	1342.6	1343.3	1344.0	1344.7	1345.4	1346.1	1346.8	1347.5	1348.2	1348.9	1349.6	1350.3	1351.0	1351.7	1352.4	1353.1	1353.8	1354.5	1355.2	1355.9	1356.6	1357.3	1358.0	1358.7	1359.4	1360.1	1360.8	1361.5	1362.2	1362.9	1363.6	1364.3	1365.0	1365.7	1366.4	1367.1	1367.8	1368.5	1369.2	1369.9	1370.6	1371.3	1372.0	1372.7	1373.4	1374.1	1374.8	1375.5	1376.2	1376.9	1377.6	1378.3	1379.0	1379.7	1380.4	1381.1	1381.8	1382.5	1383.2	1383.9	1384.6	1385.3	1386.0	1386.7	1387.4	1388.1	1388.8	1389.5	1390.2	1390.9	1391.6	1392.3	1393.0	1393.7	1394.4	1395.1	1395.8	1396.5	1397.2	1397.9	1398.6	1399.3	1399.9	1400.6	1401.3	1402.0	1402.7	1403.4	1404.1	1404.8	1405.5	1406.2	1406.9	1407.6	1408.3	1409.0	1409.7	1410.4	1411.1	1411.8	1412.5	1413.2	1413.9	1414.6	1415.3	1416.0	1416.7	1417.4	1418.1	1418.8	1419.5	1420.2	1420.9	1421.6	1422.3	1423.0	1423.7	1424.4	1425.1	1425.8	1426.5	1427.2	1427.9	1428.6	1429.3	1430.0	1430.7	1431.4	1432.1	1432.8	1433.5	1434.2	1434.9	1435.6	1436.3	1437.0	1437.7	1438.4	1439.1	1439.8	1440.5	1441.2	1441.9	1442.6	1443.3	1444.0	1444.7	1445.4	1446.1	1446.8	1447.5	1448.2	1448.9	1449.6	1450.3	1451.0	1451.7	1452.4	1453.1	1453.8	1454.5	1455.2	1455.9	1456.6	1457.3	1458.0	1458.7	1459.4	1460.1	1460.8	1461.5	1462.2	1462.9	1463.6	1464.3	1465.0	1465.7	1466.4	1467.1	1467.8	1468.5	1469.2	1469.9	1470.6	1471.3	1472.0	1472.7	1473.4	1474.1	1474.8	1475.5	1476.2	1476.9	1477.6	1478.3	1479.0	1479.7	1480.4	1481.1	1481.8	1482.5	1483.2	1483.9	1484.6	1485.3	1486.0	1486.7	1487.4	1488.1	1488.8	1489.5	1490.2	1490.9	1491.6	1492.3	1493.0	1493.7	1494.4	1495.1	1495.8	1496.5	1497.2	1497.9	1498.6	1499.3	1499.9	1500.6	1501.3	1502.0	1502.7	1503.4	1504.1	1504.8	1505.5	1506.2	1506.9	1507.6	1508.3	1509.0	1509.7	1510.4	1511.1	1511.8	1512.5	1513.2	1513.9	1514.6	1515.3	1516.0	1516.7	1517.4	1518.1	1518.8	1519.5	1520.2	1520.9	1521.6	1522.3	1523.0	1523.7	1524.4	1525.1	1525.8	1526.5	1527.2	1527.9	1528.6	1529.3	1530.0	1530.7	1531.4	1532.1	1532.8	1533.5	1534.2	1534.9	1535.6	1536.3	1537.0	1537.7	1538.4	1539.1	1539.8	1540.5	1541.2	1541.9	1542.6	1543.3	1
-------	-------	-------	-------	-------	-------	-------	-------	-------	-------	-------	-------	-------	-------	-------	-------	-------	-------	-------	-------	-------	-------	-------	-------	-------	-------	-------	-------	-------	-------	-------	-------	-------	-------	-------	-------	-------	-------	-------	-------	-------	-------	-------	-------	-------	-------	-------	-------	-------	-------	-------	-------	-------	-------	-------	-------	-------	-------	-------	-------	-------	-------	-------	-------	-------	-------	-------	-------	-------	-------	-------	-------	-------	-------	-------	-------	-------	-------	-------	-------	-------	-------	-------	-------	-------	-------	-------	-------	-------	-------	-------	-------	-------	-------	-------	-------	-------	-------	-------	-------	-------	-------	-------	-------	-------	-------	-------	-------	-------	-------	-------	-------	-------	-------	-------	-------	-------	-------	-------	-------	-------	-------	-------	-------	-------	-------	-------	-------	-------	-------	-------	-------	-------	-------	-------	-------	-------	-------	-------	-------	-------	-------	-------	-------	-------	-------	-------	-------	-------	-------	-------	-------	-------	-------	-------	-------	-------	-------	-------	-------	-------	-------	-------	-------	-------	-------	-------	-------	-------	-------	-------	-------	-------	-------	-------	-------	-------	-------	-------	-------	-------	-------	-------	-------	-------	-------	-------	-------	-------	-------	-------	-------	-------	-------	-------	-------	-------	-------	-------	-------	-------	-------	-------	-------	-------	-------	-------	-------	-------	-------	-------	-------	-------	-------	-------	-------	-------	-------	-------	-------	--------	--------	--------	--------	--------	--------	--------	--------	--------	--------	--------	--------	--------	--------	--------	--------	--------	--------	--------	--------	--------	--------	--------	--------	--------	--------	--------	--------	--------	--------	--------	--------	--------	--------	--------	--------	--------	--------	--------	--------	--------	--------	--------	--------	--------	--------	--------	--------	--------	--------	--------	--------	--------	--------	--------	--------	--------	--------	--------	--------	--------	--------	--------	--------	--------	--------	--------	--------	--------	--------	--------	--------	--------	--------	--------	--------	--------	--------	--------	--------	--------	--------	--------	--------	--------	--------	--------	--------	--------	--------	--------	--------	--------	--------	--------	--------	--------	--------	--------	--------	--------	--------	--------	--------	--------	--------	--------	--------	--------	--------	--------	--------	--------	--------	--------	--------	--------	--------	--------	--------	--------	--------	--------	--------	--------	--------	--------	--------	--------	--------	--------	--------	--------	--------	--------	--------	--------	--------	--------	--------	--------	--------	--------	--------	--------	--------	--------	--------	--------	--------	--------	--------	--------	--------	--------	--------	--------	--------	--------	--------	--------	--------	--------	--------	--------	--------	--------	--------	--------	--------	--------	--------	--------	--------	--------	--------	--------	--------	--------	--------	--------	--------	--------	--------	--------	--------	--------	--------	--------	--------	--------	--------	--------	--------	--------	--------	--------	--------	--------	--------	--------	--------	--------	--------	--------	--------	--------	--------	--------	--------	--------	--------	--------	--------	--------	--------	--------	--------	--------	--------	--------	--------	--------	--------	--------	--------	--------	--------	--------	--------	--------	--------	--------	--------	--------	--------	--------	--------	--------	--------	--------	--------	--------	--------	--------	--------	--------	--------	--------	--------	--------	--------	--------	--------	--------	--------	--------	--------	--------	--------	--------	--------	--------	--------	--------	--------	--------	--------	--------	--------	--------	--------	--------	--------	--------	--------	--------	--------	--------	--------	--------	--------	--------	--------	--------	--------	--------	--------	--------	--------	--------	--------	--------	--------	--------	--------	--------	--------	--------	--------	--------	--------	--------	--------	--------	--------	--------	--------	--------	--------	--------	--------	--------	--------	--------	--------	--------	--------	--------	--------	--------	--------	--------	--------	--------	--------	--------	--------	--------	--------	--------	--------	--------	--------	--------	--------	--------	--------	--------	--------	--------	--------	--------	--------	--------	--------	--------	--------	--------	--------	--------	--------	--------	--------	--------	--------	--------	--------	--------	--------	--------	--------	--------	--------	--------	--------	--------	--------	--------	--------	--------	--------	--------	--------	--------	--------	--------	--------	--------	--------	--------	--------	--------	--------	--------	--------	--------	--------	--------	--------	--------	--------	--------	--------	--------	--------	--------	--------	--------	--------	--------	--------	--------	--------	--------	--------	--------	--------	--------	--------	--------	--------	--------	--------	--------	--------	--------	--------	--------	--------	--------	--------	--------	--------	--------	--------	--------	--------	--------	--------	--------	--------	--------	--------	--------	--------	--------	--------	--------	--------	--------	--------	--------	--------	--------	--------	--------	--------	--------	--------	--------	--------	--------	--------	--------	--------	--------	--------	--------	--------	--------	--------	--------	--------	--------	--------	--------	--------	--------	--------	--------	--------	--------	--------	--------	--------	--------	--------	--------	--------	--------	--------	--------	--------	--------	--------	--------	--------	--------	--------	--------	--------	--------	--------	--------	--------	--------	--------	--------	--------	--------	--------	--------	--------	--------	--------	--------	--------	--------	--------	--------	--------	--------	--------	--------	--------	--------	--------	--------	--------	--------	--------	--------	--------	--------	--------	--------	--------	--------	--------	--------	--------	--------	--------	--------	--------	--------	--------	--------	--------	--------	--------	--------	--------	--------	--------	--------	--------	--------	--------	--------	--------	--------	--------	--------	--------	--------	--------	--------	--------	--------	--------	--------	--------	--------	--------	--------	--------	--------	--------	--------	--------	--------	--------	--------	--------	--------	--------	--------	--------	--------	--------	--------	--------	--------	--------	--------	--------	--------	--------	--------	--------	--------	--------	--------	--------	--------	--------	--------	--------	--------	--------	--------	--------	--------	--------	--------	--------	--------	--------	--------	--------	--------	--------	--------	--------	--------	--------	--------	--------	--------	--------	--------	--------	--------	--------	--------	--------	--------	--------	--------	--------	--------	--------	--------	--------	--------	--------	--------	--------	--------	--------	--------	--------	--------	--------	--------	--------	--------	--------	--------	--------	--------	--------	--------	--------	--------	--------	--------	--------	--------	--------	--------	--------	--------	--------	--------	--------	--------	--------	--------	--------	--------	--------	--------	--------	--------	--------	--------	--------	--------	--------	--------	--------	--------	--------	--------	--------	--------	--------	--------	--------	--------	--------	--------	--------	--------	--------	--------	--------	--------	--------	--------	--------	--------	--------	--------	--------	--------	--------	--------	--------	--------	--------	--------	--------	--------	--------	--------	--------	--------	--------	--------	--------	--------	--------	--------	--------	--------	--------	--------	--------	--------	--------	--------	--------	--------	--------	--------	--------	--------	--------	--------	--------	--------	--------	--------	--------	--------	--------	--------	--------	--------	--------	--------	--------	--------	--------	--------	--------	--------	--------	--------	--------	--------	--------	--------	--------	--------	--------	--------	--------	--------	--------	--------	--------	--------	---

## GOALS

- Improve safety for pedestrians, bicyclists, and vehicular traffic
- Enhance roadway network reliability for industrial and commercial freight traffic
- Provide protected side path trail facilities to meet pedestrian and bicycle demand
- Improve storm water runoff quality through water quality amenities along the corridor



**LEGEND**

- PROPOSED PAVEMENT
- PROPOSED GRANULAR SURFACE
- PROPOSED RETAINING WALL
- PROPOSED BRIDGES AND BOX CULVERTS
- PROPOSED PERMANENT ACQUISITION
- PROPOSED PERMANENT EASEMENT
- PROPOSED TEMPORARY EASEMENT
- SEORETENTION CELLS
- PROPERTY LINES
- LOT LINES
- EXISTING RIGHT OF WAY LINES

**PUBLIC INFORMATION MEETING**  
 August 4th and 5th, 2021  
**NE Broadway Avenue**  
 Polk County, Iowa  
 Project Number: FM-C077(227)-55-77  
 Photo - August, 2020



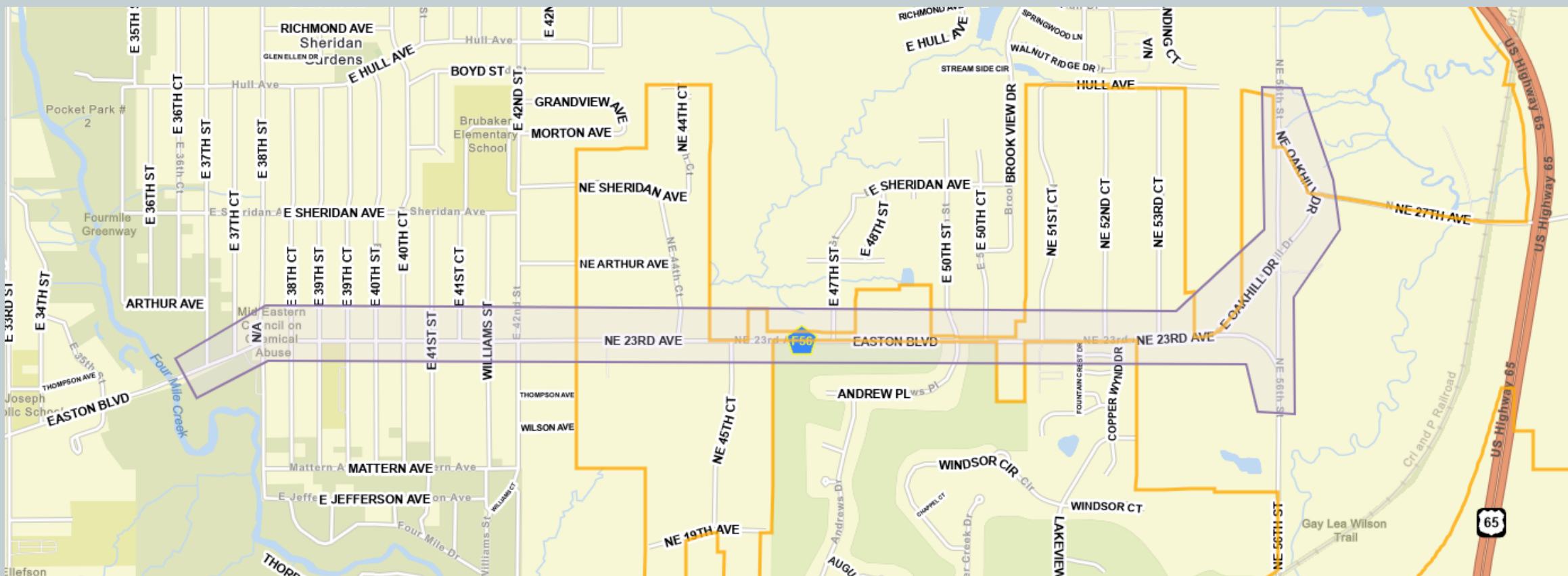
# LESSONS LEARNING

- Communication
- Coordination
- Railroad – UP
- Utility conflicts
- Project timing / scheduling / stages
- Costs
- Federal Grant

# TIMELINE

- Under construction
  - East from NE 38<sup>th</sup> Ave to Hubbell – planned full opening very soon
  - West end between NE 14<sup>th</sup> and NW 2<sup>nd</sup> in full construction mode
- Up Next
  - Middle from NE 22<sup>nd</sup> to NE 29<sup>th</sup> up next
- Grand Finale
  - The UP Railroad Bridge- not yet bid – scheduled to bid in fall.
- Full project completion by mid 2026

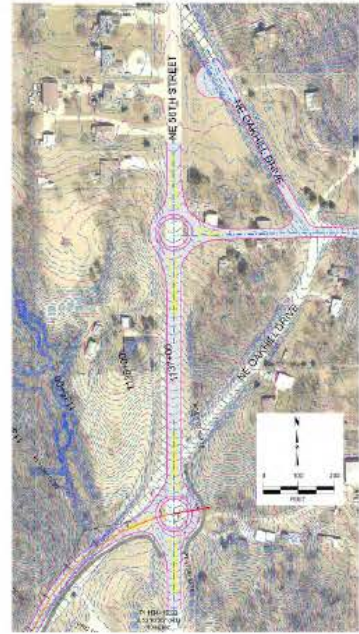
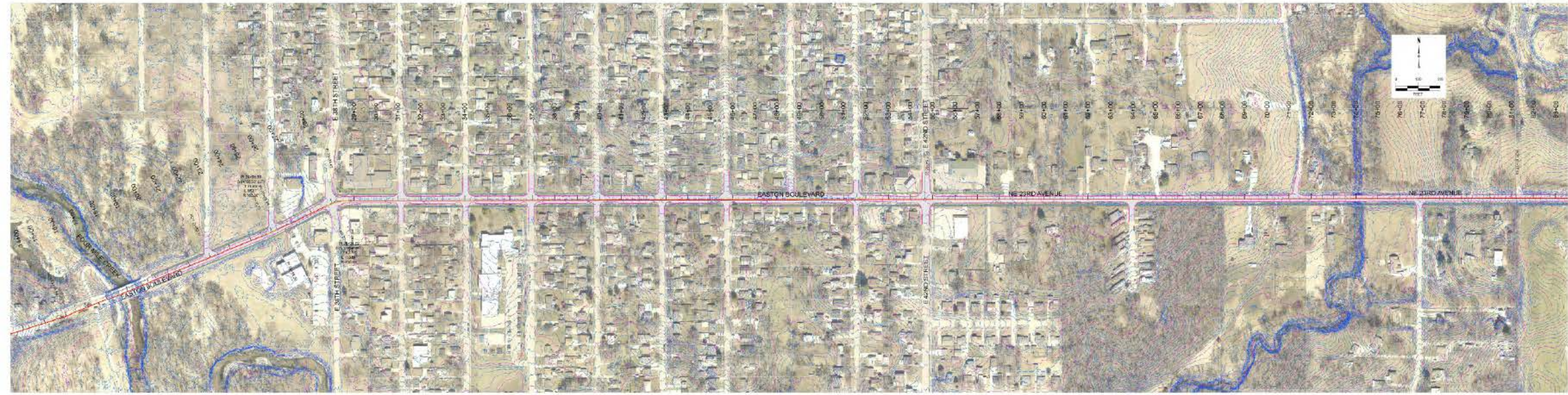
# EASTON BOULEVARD



## PROJECT FEATURES

- Convert rural cross section to urban
- Improve turning movements
- Intersection and pedestrian access improvements
- Round-a-bouts at end of corridor at NE 56<sup>th</sup> Street
- Add sidewalk to corridor
- Add lighting on the corridor



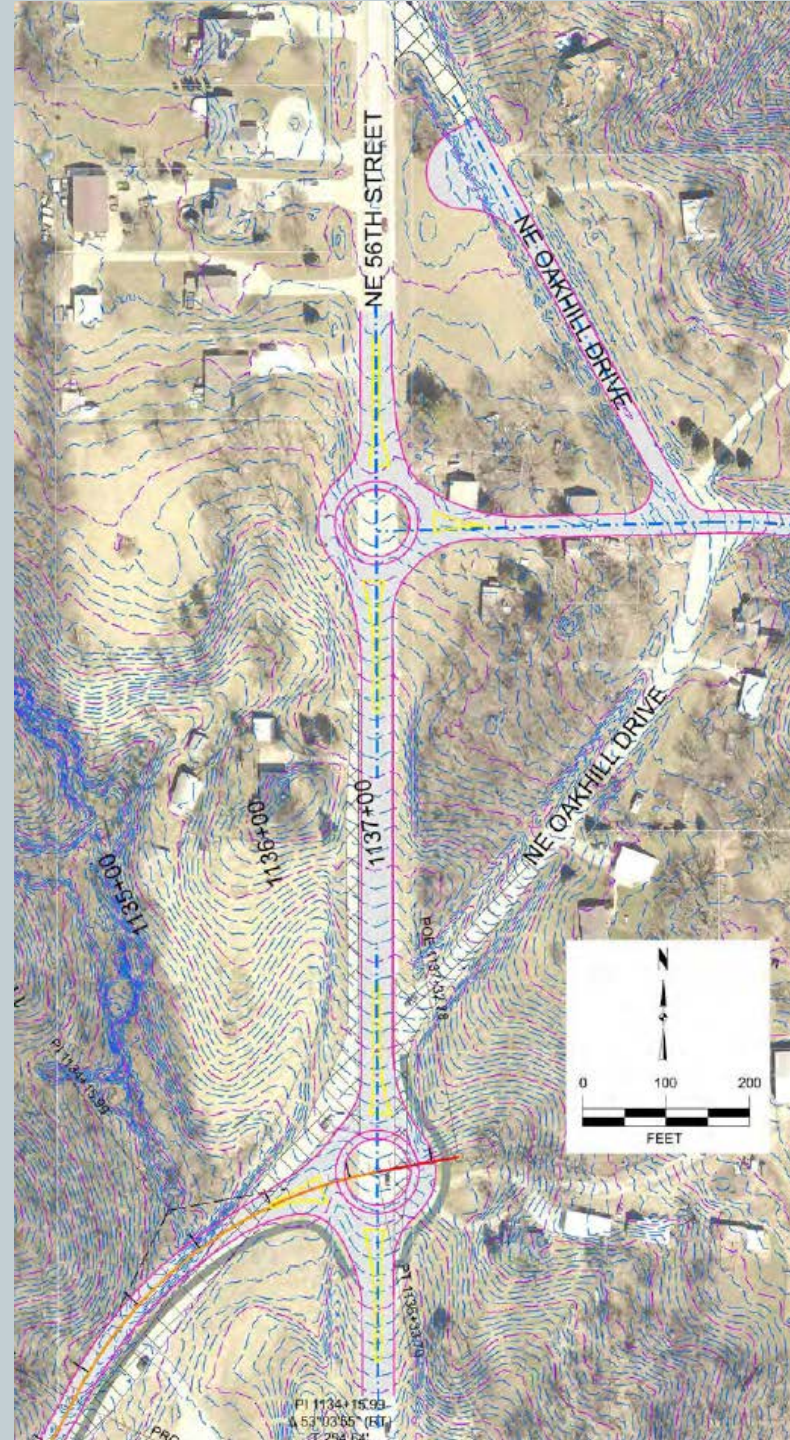


## GOALS

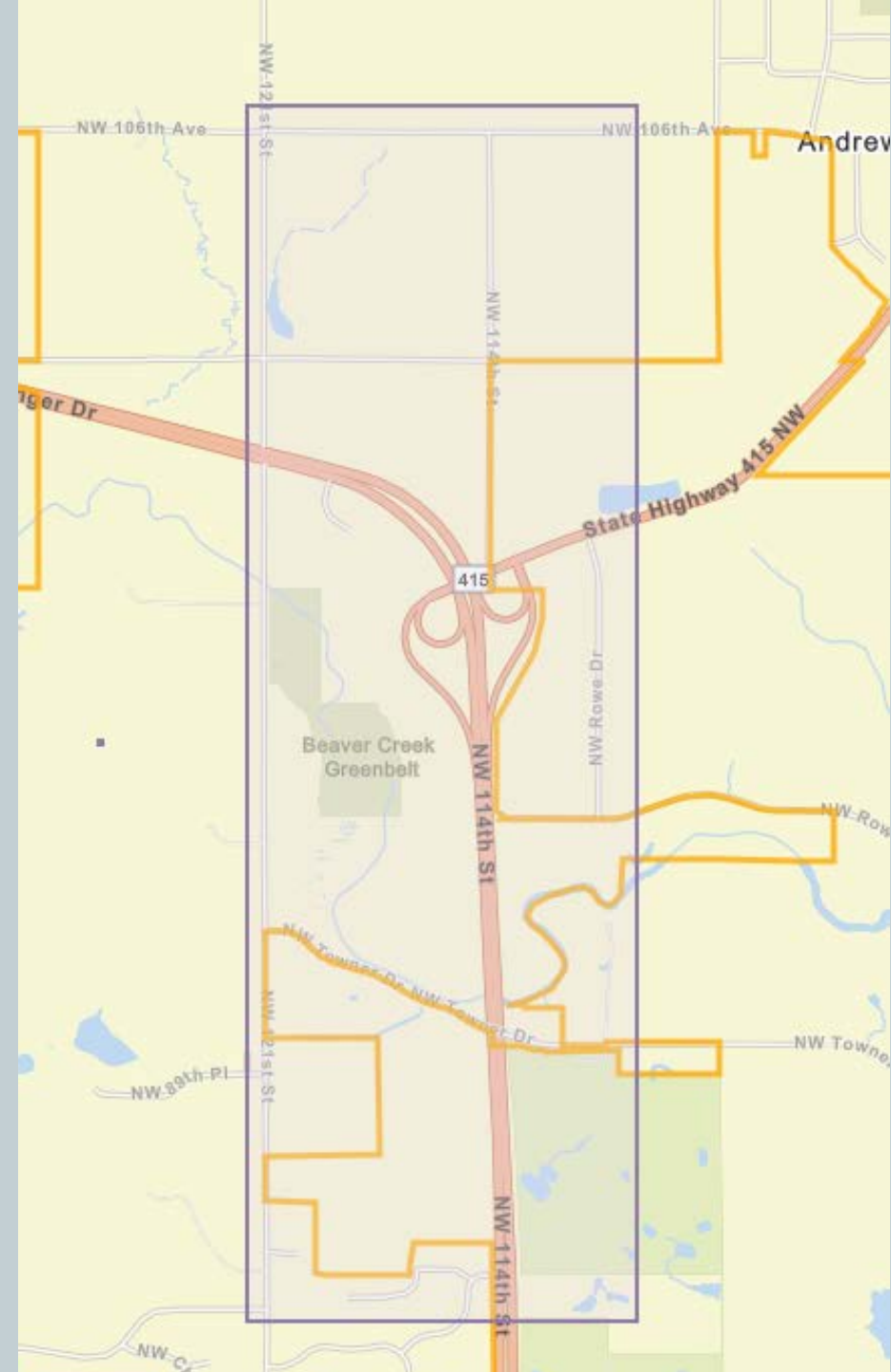
- Improve safety for pedestrians, bicyclists, and vehicular traffic
- Enhance roadway network reliability for commuters and local workers
- Improve access to food, jobs, and other necessities
- Improve storm water runoff quality through water quality amenities along the corridor
- Reduce future congestion and left turn delays for the estimated 10,000 vehicles per day projected for 2030.

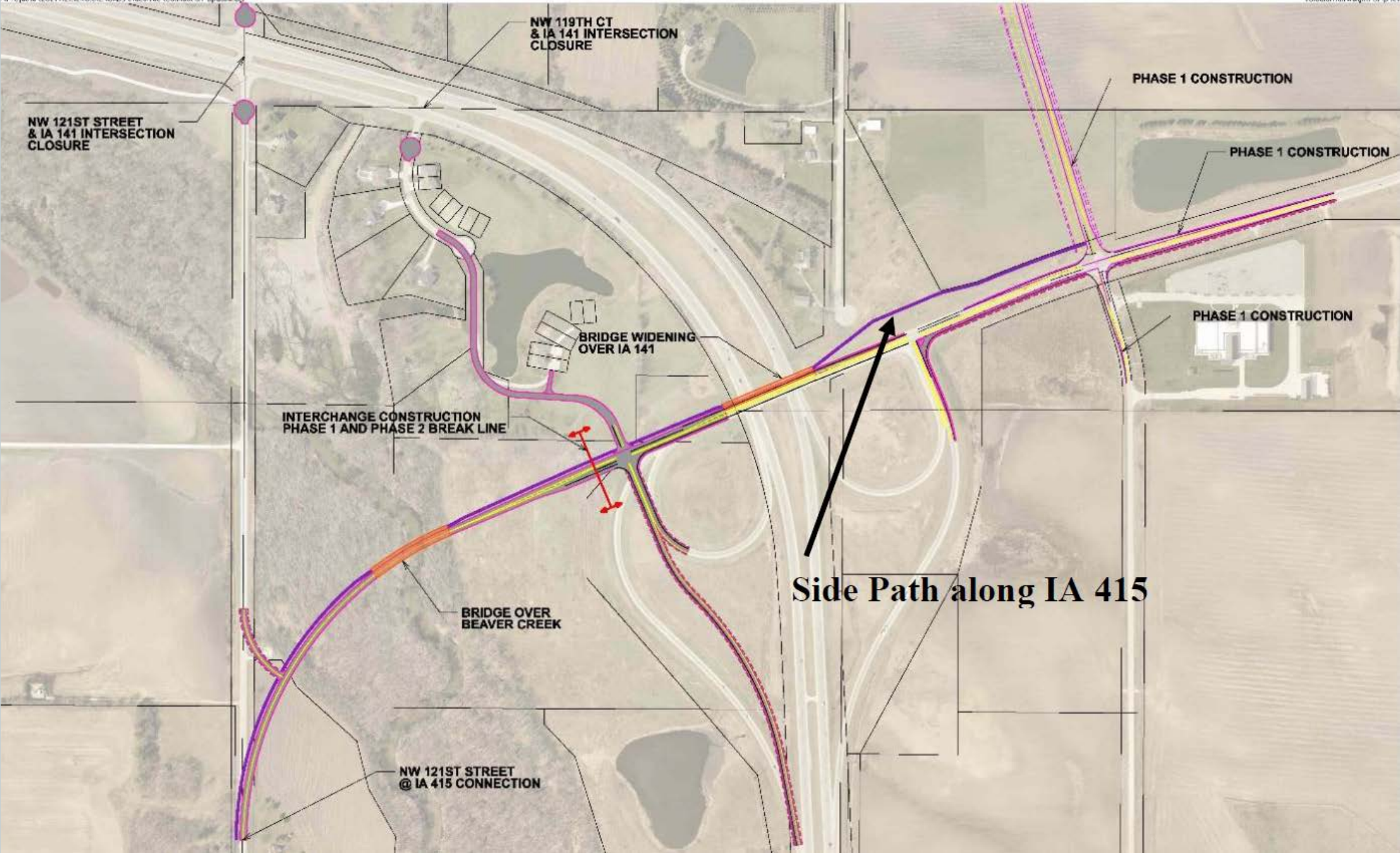


# NE 56<sup>TH</sup> ROUNDBABOUTS CONCEPT



# HWY 141- 415 INTERCHANGE IMPROVEMENTS





NW 121ST STREET  
& IA 141 INTERSECTION  
CLOSURE

NW 119TH CT  
& IA 141 INTERSECTION  
CLOSURE

PHASE 1 CONSTRUCTION

PHASE 1 CONSTRUCTION

PHASE 1 CONSTRUCTION

BRIDGE WIDENING  
OVER IA 141

INTERCHANGE CONSTRUCTION  
PHASE 1 AND PHASE 2 BREAK LINE

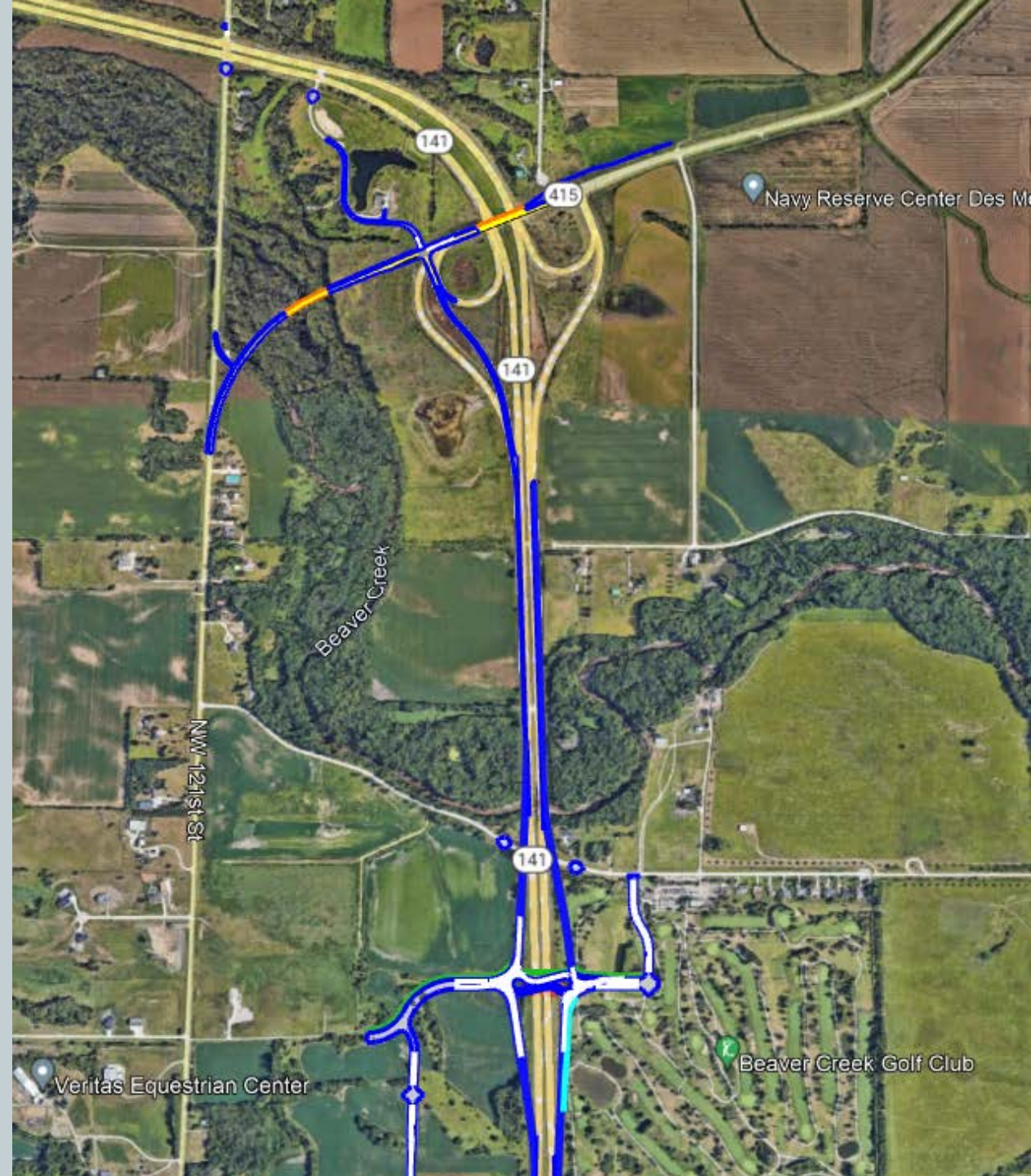
BRIDGE OVER  
BEAVER CREEK

NW 121ST STREET  
@ IA 415 CONNECTION

Side Path along IA 415



RAISE GRANT  
415 INTERCHANGE  
&  
RELOCATED  
TOWNER DRIVE  
INTERCHANGE





## PROJECT FEATURES AND GOALS

- Convert the north 5.5 miles of the IA 141 corridor to a Priority 1 access-controlled highway – north of Grimes to HWY 17
- Improve safety for pedestrians, bicyclists, and vehicular traffic
- Enhance roadway network reliability for commuters and residents
- Support economic development
- Improve stormwater runoff quality

TIMELINE

2023	2024	2025	2026	2027	2028	2029	2030	2031	2032
<b>Construction Phase</b>									
					Construction Phase I Safety Improvements (non-RAISE)				
					★	Bid Letting Phase II Safety Improvements (RAISE)			
	Phase II Construction - NW Towner Dr.								
		Phase II Construction - IA 415 Interchange Expansion						PH II RAISE Federal Audit	

QUESTIONS / COMMENTS?

# **FY 2025 UNIFIED PLANNING WORK PROGRAM & BUDGET FINAL DRAFT**

# FY 2025 UPWP and Budget Development

- MPO's scope of work for next fiscal year
  - Work elements and activities
  - Committees
  - Costs
- Requested feedback in January and February from MPO members about work activities and have incorporated feedback received
- Draft approved in March and submitted to Iowa DOT/FHWA; minor updates made
- Final due June 1st

# FY 2025 UPWP and Budget Development

Task 1: Planning & Studies	MPO Role	Notes
Mobilizing Tomorrow Update	Lead	Federally Required
US 65/IA 5 Interstate Designation	Lead	Ongoing Project
Corridor Preservation Study	Lead	Member Request
Passenger Transportation Plan/Human Service Coordination	Lead	Federally Required
Goods Movement Study	Lead	Member Request/Ongoing Project
Passenger Rail Feasibility Study	Lead or Support	Member/Community Request
Transportation Capital Improvement Plan	Lead	Regular MPO Activity
Multimodal Economic Impact Report	Lead	Member Request
DART Planning Projects	Support	Per MOU with DART
Comprehensive Safety Action Plan	Lead	Develop w/Safe Streets for All Grant
<i>*Midwest Intercity Passenger Rail Initiative</i>	<i>Support</i>	<i>Request from Technical Committee</i>

# FY 2025 UPWP and Budget Development

<b>Task 2: Data Collection, Research, &amp; Analysis</b>	<b>MPO Role</b>	<b>Notes</b>
Performance Measure Tracking	Lead	Federally Required
Travel Demand Model Update & Assistance	Lead	Federally Required
Roadway Pavement Forecast & Analysis	Lead	Ongoing Project
Trail Pavement Data Collection & Analysis	Lead	Ongoing Project – Includes Data Bike
ITS Architecture	Lead	Federally Required
Transportation Data/Software	Lead	Member Request – Includes Data Service Subscriptions
Bike/Ped Count Program	Lead	Ongoing Project/Member Request – Includes Trail Counters

# FY 2025 UPWP and Budget Development

<b>Task 3: Funding &amp; Programming</b>	<b>MPO Role</b>	<b>Notes</b>
Surface Transportation Block Grant/Transportation Alternatives Program Process	Lead	Federally Required
Transportation Improvement Program	Lead	Federally Required
Transload Facility Grant Reporting	Lead	Federally Required w/BUILD Grant
Water Trails BUILD Grant Administration	Lead	Federally Required w/BUILD Grant
Grant Letters of Support	Support	Member Requests
DC Trip Project Facilitation	Support	Ongoing Project



# FY 2025 UPWP and Budget Development

<b>Task 4: Stakeholder Engagement</b>	<b>MPO Role</b>	<b>Notes</b>
Upkeep of Title VI, LEP, and Public Involvement Process	Lead	Federally Required
Committee Support	Lead	Federally Required
Tomorrow Plan Speaker Series	Support	Ongoing Project
Media Relations	Lead/Support	Ongoing/Situational
Public Meeting Support	Lead	Federally Required
Annual Report	Lead	Ongoing Project

# FY 2025 UPWP and Budget Development

<b>Task 5: Program Administration</b>	<b>MPO Role</b>	<b>Notes</b>
Unified Planning Work Program and Budget	Lead	Federally Required
MPO Operating Grant Administration	Lead	Federally Required
Annual Audit	Lead	Federally Required
Routine Office Administration	Lead	Ongoing
Strategic Planning	Lead	Situational

# FY 2025 UPWP and Budget Development

- Next Steps
  - MPO approves final in May and submits to Iowa DOT/FHWA/FTA
  - MPO-Iowa DOT planning agreement completed in June
  - New budget takes effect July 1

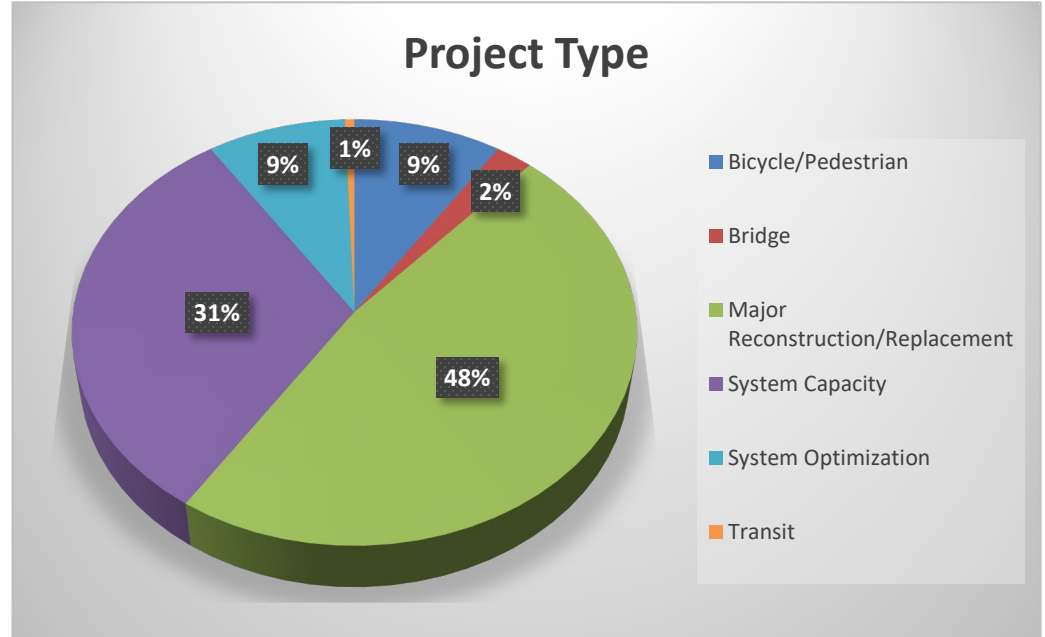
# MOBILIZING TOMORROW UPDATE

# Mobilizing Tomorrow Update

- LRTP Project Overview
  - Required to update every 4-years
  - Plan has a horizon year of 2050
  - Next update is due November 2024

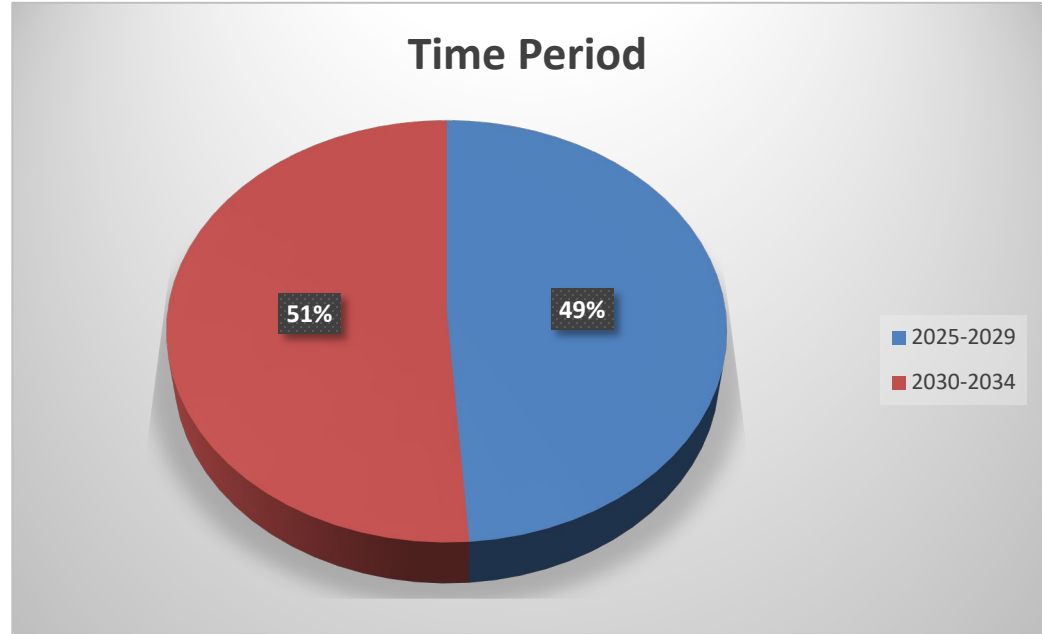
# Mobilizing Tomorrow Update

- L RTP Project Overview
  - Staff solicited projects from member governments
  - 172 projects were submitted for the 2025-2034 timeframe
  - Still anticipating receiving projects from Polk County



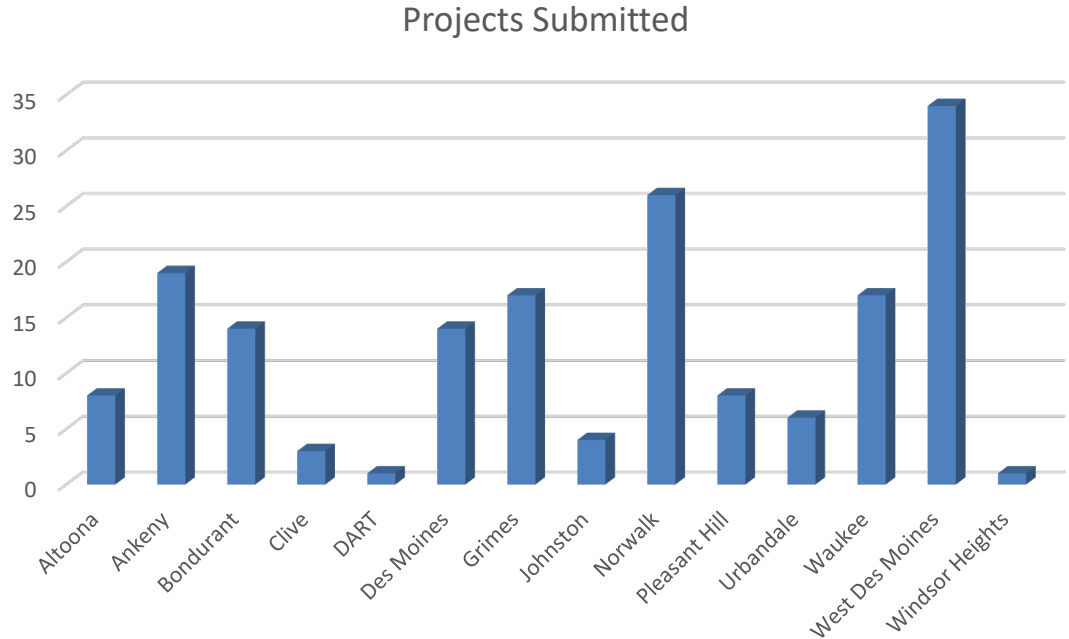
# Mobilizing Tomorrow Update

- LRTP Project Overview



# Mobilizing Tomorrow Update

- LRTP Project Overview
  - Average projects = 12
- No projects submitted:
  - Carlisle
  - Mitchellville
  - Polk City
  - Dallas County
  - Warren County





# Mobilizing Tomorrow Update

- LRTP Project Overview – Fiscal Capacity
  - YOE used 4% annual inflation factor
  - Average estimated project cost was \$9.6 million
  - Projected funding methodology approved in January 2024

	2025-2029	2030-2034	Total
<b>Project Costs (YOE)</b>	\$852.0	\$1,223.1	\$2,075.1
<b>Projected Funding</b>	\$1,257.3	\$1,316.5	\$2,573.8
<b>Fisical Capacity</b>	\$405.3	\$93.4	\$498.7

# Mobilizing Tomorrow Update

- Growth Scenario Update
  - Policy Committee approved added language
  - HDR is wrapping up edits to the TAZ shapefile
  - Staff will send out an Excel spreadsheet and TAZ map to each member government
  - Member governments will insert their housing/employment growth into the spreadsheet and return to staff

# Mobilizing Tomorrow Update

- Next Steps
  - Send growth scenario spreadsheets to member governments
  - Collect public comment on submitted projects
  - Incorporate submitted projects and growth into the model
  - Updating draft chapters and send out for review

# Regional Freight Survey

As part of the Mobilizing Tomorrow update, MPO staff prepared a long-range freight survey

- Prioritize freight topics
- Identify freight impediments
- Categorize freight-related strengths, weaknesses, opportunities, threats

Survey Link: <https://forms.office.com/r/hKGXQHBTNm>

Please share and distribute to interested parties

- Business community
- Economic development
- Logistics and rail companies
- Etc.



# **CARBON REDUCTION PROGRAM FUNDING PROCESS**

# Carbon Reduction Program

- Background
  - Last year staff presented on CRP funding with a recommendation to hold off on making awards until the LRTP update was completed.
  - Earlier this year staff brought back the CRP item as it related to EV charging; TTC expressed desire to look at other alternatives and for staff to bring back for further discussion.
  - During the FFY 2028 STBG funding cycle, the Funding Subcommittee inquired if CRP funding could be used to stabilize DART.
  - This resulted in the Policy Committee voting to award DART \$3.6 million in CRP funding in April and direction for staff to determine options for remaining funds.

# Carbon Reduction Program

Federal Fiscal Year	2023 Projected	2024 Projected	2025 Projected	2026 Projected	2027 Projected	2028 Projected	Total
Unobligated Balance (Carryover)	\$0	\$1,381,465	\$2,732,549	\$698,191	\$2,295,191	\$3,924,191	
Federal CRP Program Award	\$1,381,465	\$1,351,084	\$1,565,642	<b>\$1,597,000</b>	<b>\$1,629,000</b>	<b>\$1,629,000</b>	\$9,153,191
<b>Total Revenue</b>	<b>\$1,381,465</b>	<b>\$2,732,549</b>	<b>\$4,298,191</b>	<b>\$2,295,191</b>	<b>\$3,924,191</b>	<b>\$5,553,191</b>	<b>\$9,153,191</b>
Transfer Out							\$0
Programmed CRP Funds	\$0	\$0	\$3,600,000	\$0	\$0	\$0	\$3,600,000
Expended CRP Project Funds	\$0	\$0	\$0	\$0	\$0	\$0	\$0
Fund Adjustments/Returns	\$0	\$0	\$0	\$0	\$0	\$0	\$0
<b>Total Expenditures</b>	<b>\$0</b>	<b>\$0</b>	<b>\$3,600,000</b>	<b>\$0</b>	<b>\$0</b>	<b>\$0</b>	<b>\$3,600,000</b>
Ending Cash Balance, Sept 30 (DOT)	\$1,381,465	\$2,732,549	<b>\$698,191</b>	\$2,295,191	\$3,924,191	\$5,553,191	\$5,553,191

# Carbon Reduction Program

---

- Staff has invited Andrea White with the Iowa DOT to provide an overview of the CRP, eligible uses, and what other MPOs are doing.





# Iowa Carbon Reduction Strategy

DMAMPO TTC

IOWA | DOT

Andrea White  
Statewide Planning Coordinator

May 2, 2024

# Carbon Reduction Strategy (CRS)

- New requirement for states in 2021 Infrastructure Investment & Jobs Act (IIJA)
- Developed in consultation with MPOs
- Updated every four years



## Iowa approach for initial CRS

- Address federal requirements but have a relatively streamlined document
- Opportunity to compile relevant strategies and initiatives that have been identified through planning processes across MPOs and Iowa DOT
- Wide-ranging strategies:
  - Planning level to project level
  - May involve or require other stakeholders than transportation agencies
  - May align better with other funding opportunities than Carbon Reduction Program (CRP) funding

# CRS Strategy Categories

## Multimodal Transportation



- Public transit
- Bicyclists and pedestrians
- Complete Streets
- Reduce single occupant vehicles
- Passenger and commuter rail

## Operational Efficiency



- Transportation Systems Management and Operations (TSMO)
- State of good repair
- Travel Demand Management (TDM)

## Alternative Fuels



- Alternative and renewable fuel infrastructure
- Vehicles that utilize alternative and renewable fuels
- Enhance coordination

## Construction



- Sustainable elements or construction practices
- Cross-sector use of right-of-way
- Reduce carbon impacts during construction projects

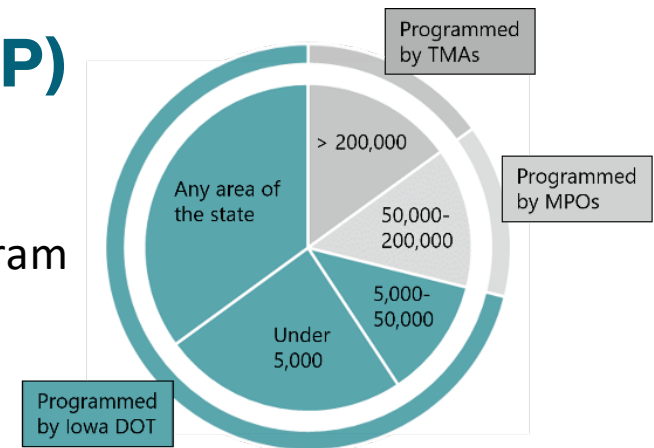
## Other



- Integrate transportation and land use planning
- Improve freight efficiency
- Other projects or programs

## Carbon Reduction Program (CRP)

- 65% required to be allocated by population.
- Iowa DOT providing TMAs/MPOs funds to program for their areas.
- TMAs/MPOs can determine their own selection/prioritization process.
- Projects funded with CRP funds are required to be treated as projects on Federal-aid highways.
- Iowa DOT guidance/requirements for CRP is likely to evolve and is aimed at maximizing the efficient use of CRP funds while minimizing administrative burden. Current restricted uses:
  - Preliminary and construction engineering, consistent with Iowa's Surface Transportation Block Grant (STBG) Program guidance.
  - Electric vehicle charging infrastructure, unless part of a public transportation project eligible for assistance under 23 U.S.C. 142.



## Examples of potentially eligible projects

- Traffic monitoring, management, and control facilities or programs
- Public transportation projects
- Transportation alternative projects
- Advanced transportation and congestion management technologies
- Intelligent transportation systems capital improvements
- Travel demand management strategies and programs
- Efforts to reduce the environmental and community impacts of freight
- Projects to improve traffic flow that are eligible under the CMAQ program, and that do not involve construction of new capacity
- Full list: [https://www.fhwa.dot.gov/bipartisan-infrastructure-law/crp\\_fact\\_sheet.cfm](https://www.fhwa.dot.gov/bipartisan-infrastructure-law/crp_fact_sheet.cfm).

### Projects other Iowa MPOs have expressed interest in

- Transportation alternatives – on and off-road infrastructure for bicyclists/pedestrians
- Public transportation
- Intelligent transportation system components

## Questions?

---

**Andrea White**

515-239-1210

[andrea.white@iowadot.gov](mailto:andrea.white@iowadot.gov)

[iowadot.gov](http://iowadot.gov)

# Carbon Reduction Program

---

- Staff recommends that a subcommittee be formed to look at the CRP program and develop a recommended process for moving forward.
- Is this the direction you would like to go?

# AVAILABLE FUNDING OPPORTUNITIES



# Available Funding Opportunities

## Communities Taking Charge Accelerator Program (May 20, 2024)

- \$54 million for projects that expand e-mobility

## Strategic Innovation for Revenue Collection (SIRC) Program (May 27, 2024)

- grants to test the feasibility of a road usage fee and other user-based alternative revenue mechanisms
- \$15 million available annually

## Transportation Access Pilot Program (June 7, 2024)

- FHWA accepting letters of intent for pilot program to look at transportation accessibility

# Available Funding Opportunities

## Active Transportation Infrastructure Investment Program (ATIIP) (June 17, 2024)

- \$44.5 million available to construct active transportation networks

## State Recreational Trails Program (July 1, 2024)

- Iowa DOT accepting applications for the SRT program

## Low Carbon Transportation Materials (LCTM) Grant Program (NOFO later this year)

- \$800 million to increase the use of low-carbon materials in transportation projects

# UPCOMING EVENTS

# Upcoming Events

## Webinars

- [Adapting to Changes in Concrete Materials and Mixtures](#) – May 7
- A
- [Transportation electrification and smart growth in the U.S.](#) - May 14
- [Working/Planning to Advance Transportation and Health Equity](#) - May 15
- [Equitable Data Analysis](#) – May 22
- [2024 State of the Practice: 10 Public Engagement Trends in Transportation](#) – May 22
- [Climate Adaptation and Resilience in Transportation](#) – May 30
- [A Parking Roadmap: Where to Start When Managing Parking for Your Trail](#) – June 6
- [Talking Traffic Webinar: Bicycle and Pedestrian Count Data Gathering and Reporting](#) – June 11
- [Three Ways to Estimate the Economic Impact of Trails and Outdoor Recreation](#) – June 16

## Events

- [NACTO Designing Cities Conference](#) – May 7-10 – Miami, FL
- [APA National Planning Conference Virtual](#) – May 8 – 10 – Virtual
- Iowa Section ITE [Equitable Transportation with Iowa Dept. Of the Blind](#) – May 16 – Des Moines, IA
- [2024 US Vision Zero Academy](#) – May 20-24 – Washington, D.C.

# OTHER ITEMS OF INTEREST

# Iowa DOT State Rail Plan Survey

Iowa DOT is seeking input from cities and counties for their State Rail Plan

- Survey intended to capture conflict locations and problem incidents with Iowa's rail network, so multiple responses are encouraged
- Questions can be directed to Caleb Whitehouse ([caleb.whitehouse@iowadot.us](mailto:caleb.whitehouse@iowadot.us)) or Maria Hobbs ([maria.hobbs@iowadot.us](mailto:maria.hobbs@iowadot.us))

Survey Link: <https://arcg.is/1OHq9z>

Please complete survey by June 14, 2024

### Iowa State Rail Plan Input

This survey is being sent to Iowa cities and counties to gather input on points of conflict between local governments and railroads, as well as opportunities for new or improved rail service. The information gathered will be used by the Iowa Department of Transportation as part of the State Rail Plan.

Each response to this survey should reflect the issues/opportunities at the location indicated. You are encouraged to submit separate responses for each location. If your response is not tied to a location, you may refrain from submitting a location.

For information about which railroads operate in your communities please follow this link: [https://iowadot.gov/iowarail/railroads/maps/Rail\\_ServiceMap.pdf](https://iowadot.gov/iowarail/railroads/maps/Rail_ServiceMap.pdf)

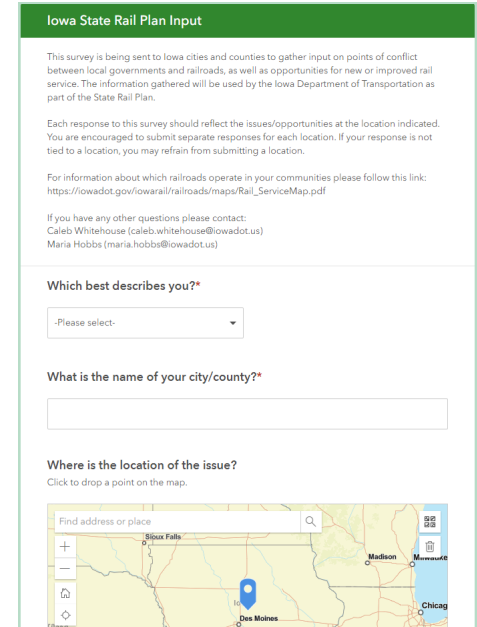
If you have any other questions please contact:  
Caleb Whitehouse ([caleb.whitehouse@iowadot.us](mailto:caleb.whitehouse@iowadot.us))  
Maria Hobbs ([maria.hobbs@iowadot.us](mailto:maria.hobbs@iowadot.us))

Which best describes you?\*

-Please select-

What is the name of your city/county?\*

Where is the location of the issue?  
Click to drop a point on the map.



# StreetLight Data

Policy Committee approved contract in April

- Each MPO member provided one license/seat
- Provide Zhi Chen the name and email address of who should be registered from your community
- Trainings will be available.




**STREETLIGHT DATA**  
Big Data for Mobility

# Spring Cleaning: Temporary Rubber Curbs up for grabs





# May 2, 2024, Agenda



1. Call to Order
2. VOTE: Approval of Agenda
3. VOTE: Approval of Meeting Minutes
4. PRESENTATION: Polk County Project Updates
5. REPORT and VOTE: *FY 2025 Unified Planning Work Program & Budget Final Draft*
6. REPORT: Mobilizing Tomorrow Update
7. REPORT and OPTIONAL VOTE: Carbon Reduction Program Funding Process
8. REPORT: Available Funding Opportunities
9. REPORT: Upcoming Events
10. Other Non-Action Items of Interest to the Committee
11. Next Meeting Date – June 6, 2024 – 9:30 a.m.
12. Adjournment